

Tabletop cementation with 3M™ RelyX™ Universal Resin Cement and 3M™ Scotchbond™ Universal Plus Adhesive



Clinical case

Dr. Andrew See

About the case

A 54-year male with a history of bruxism presented with cracks in tooth 16. The tooth tested vital. After removal of the existing amalgam restoration, extensive radiating crack lines were found propagating from mesial to distal and buccal to palatal. Due to his bruxism and history of cracked teeth that needed endodontic treatment, it was decided to protect the tooth from further cracks with a cusp-capping tabletop restoration.

Cusps were reduced to the minimum required thickness (1.5mm) of the indirect material. Dentine was sealed with 3M™ Scotchbond™ Universal Plus Adhesive and the cavity was lined with 3M™ Filtek™ Bulk Fill Flowable. A lithium disilicate restoration was fabricated chairside, stained and glazed. Bonding was performed with 3M™ RelyX™ Universal Resin Cement using a selective enamel etch protocol and Scotchbond Universal Plus Adhesive as the restoration primer and tooth adhesive.

Featured products:

3M™ Scotchbond™ Universal Plus Adhesive

3M™ Filtek™ Bulk Fill Flowable

3M™ RelyX™ Universal Resin Cement



About Dr. Andrew See

Dr. Andrew See is a cosmetic and implant dentist. His practice in Sydney, Australia, is focused on aesthetic rehabilitation, implantology and hard and soft tissue augmentation.

He completed his Bachelor of Dental Surgery with Honors from the University of Sydney in 2003 and then went on to complete a Postgraduate Diploma in Dental Implantology and a Masters Degree with Distinction in Esthetic Dentistry through King's College London.

Dr. See has completed his Fellowship by primary and secondary examination for The Royal Australasian College of Dental Surgeons (FRACDS). He is also a Fellow of the International Congress of Oral Implantologists.

Case overview

Refer to instructions for use (IFU) for complete product information.



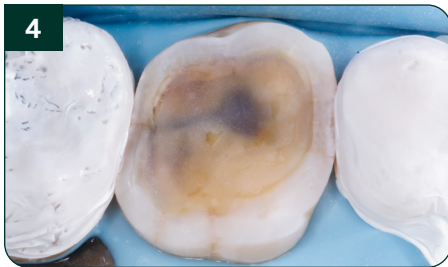
Initial situation under total isolation.



Removal of old amalgam revealed cracks running under buccal and distobuccal cusps.



Table-top preparation with minimum required occlusal reduction of 1.5mm.



Dentine sealed with 3M[™] Scotchbond[™] Universal Plus Adhesive, cavity lined with 3M[™] Filtek[™] Bulk Fill Flowable.



Chairside fabricated monolithic lithium disilicate restoration.



Bonding surface after HF etching and priming with 3M[™] Scotchbond[™] Universal Plus Adhesive.



Selective enamel etching followed by application of 3M[™] Scotchbond[™] Universal Plus Adhesive.



Seating of table-top on restoration after application of 3M[™] RelyX[™] Universal Resin Cement.



Seated restoration with cement excess.



Resin excess cleaned up in uncured state with instruments and floss.



Buccal view after light-cure administered through glycerin gel.



Final situation.



Solventum Dental Solutions

1-800-634-2249
Solventum.com

[Learn more at solventum.com](https://www.solventum.com)

© Solventum 2025. Solventum, the S logo, Filtek and RelyX are trademarks of Solventum or its affiliates. 3M, Scotchbond and the 3M logo are trademarks of 3M.