

3M Science.
Applied to Life.™



RelyX™ Luting Plus Resin Modified Glass Ionomer Cement

Everyday easy.

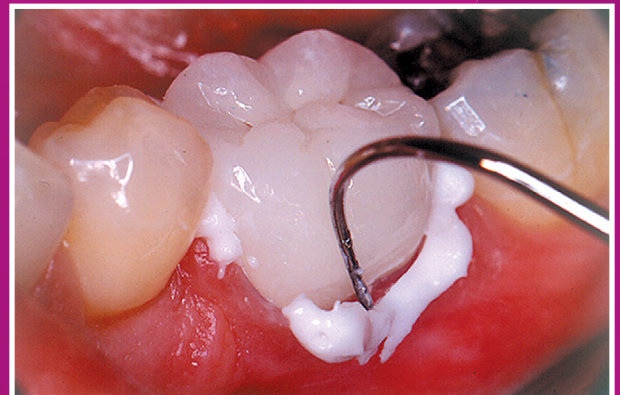


Recommended for:
Metal and porcelain fused to metal
(PFM) Pediatric crowns, orthodontic
bands, implants

Automix delivery eliminates hand-mixing

Convenient, versatile and easy-to use 3M™ RelyX™ Luting Plus Cement eliminates hand-mixing while offering better bond strength than conventional glass ionomer luting cements. This formula is suitable for a wide range of everyday applications, including PFMs, metal and pediatric crowns and zirconia restorations.

- 5-second tack light cure feature for “cleanup on demand”
- Easy to use automix delivery
- Sustained fluoride release for caries-prone patients
- A good choice for pediatric restorations
- Higher bond strength than conventional glass ionomer
- Virtually no post-op sensitivity



RelyX Luting Plus is a resin-modified glass ionomer cement with a tack light cure option, for faster clean-up.

Get more convenience – without sacrificing strength.

RelyX Luting Plus cement is formulated to help make everyday procedures like PFMs and metal/pediatric crowns faster and more reliable.

Featuring an improved paste/paste formula with tack light cure option, RelyX Luting Plus offers better bond strength compared to other leading RMGI cements, while making clean-up fast and easy. Also available in the Clicker™ Dispenser.

Recommended Applications (++) Highly recommended / + Recommended)

Indication	Metal/ Metal Based	Glass Ceramics (including Li. Disilicate) (e.g. e.max®, VITA Mark II, IPS Empress 2)	Oxide Ceramics (e.g. Lava™ Plus, Brux Zir®, Procera™)	Resin Nano Ceramics (e.g. Lava™ Ultimate CAD/CAM Restorative)	Resin Composites
Inlays/ Onlays	+		+		
Crowns/ Bridges	++		+		
Endodontic Posts	++		+		
Maryland Bridges					
On Implant Abutments	++		++		



RelyX™ Luting Plus Automix — Trial Kit (3535TK)



RelyX™ Luting Plus Clicker™ Dispenser — Trial Kit (3525TK)

Ordering Information

Item No.	Product	Contents
3535TK	RelyX™ Luting Plus Automix Resin Modified Glass Ionomer Cement Trial Kit	(1) 8.5g automix syringe (12) – mixing tips technique guide instructions for use
3535	RelyX™ Luting Plus Automix Resin Modified Glass Ionomer Cement Value Pack	(3) 8.5g automix syringe (36) – mixing tips technique guide instructions for use
3540	RelyX™ Luting Plus Automix Resin Modified Glass Ionomer Cement Automix Tips	(12) mixing tips
3525TK	RelyX™ Luting Plus Cement Trial Kit Clicker™ Dispenser	(1) 11g Clicker™ Dispenser Technique Guide Instructions for Use
3525	RelyX™ Luting Plus Cement Refills Clicker™ Dispenser	(2) 11g Clicker™ Dispensers Instructions for Use



3M Oral Care
2510 Conway Avenue
St. Paul, MN 55144-1000 USA

Phone 1-800-634-2249
Web 3m.com/dentalcements

3M Canada
Post Office Box 5757
London, Ontario N6A 4T1
Canada

Phone 1-888-363-3685

3M, “3M Science. Applied to Life.”, Clicker and RelyX are trademarks of 3M Company or 3M Deutschland GmbH. Used under license in Canada. All other trademarks are owned by their respective owners.

Please recycle. © 3M 2018.
All rights reserved. 70-2013-0488-1 HB14373 REV 7/2018