



Simplify your tray – and your day

Reinvent your inventory with the Solventum Universal Series: 3 key products for virtually any restoration



One family of products

A universe of possibilities

What if you could cut down inventory to just the essentials? The universal series from Solventum allows you to perform virtually any restoration with fewer products, helping you and your practice.



Save time



Worry less about cost and waste



Simplify direct and indirect workflows



Create positive patient experiences

3M™ RelyX™ Universal Resin Cement

Works both as a standalone, self-adhesive cement and as an adhesive cement when combined with Scotchbond Universal Plus Adhesive.



3M™ Scotchbond™ Universal Plus Adhesive

A true one-bottle system¹ with excellent bond strength, suitable for virtually all direct and indirect indications, all etching techniques, and all dental substrates. It also serves as a universal primer for virtually all restoration materials.



3M™ Filtek™ Supreme Ultra Universal Restorative

Exceptional esthetics and handling with excellent polish retention and outstanding strength for both anterior and posterior restorations.



¹No separate primer, silane, or dual-cure activator required

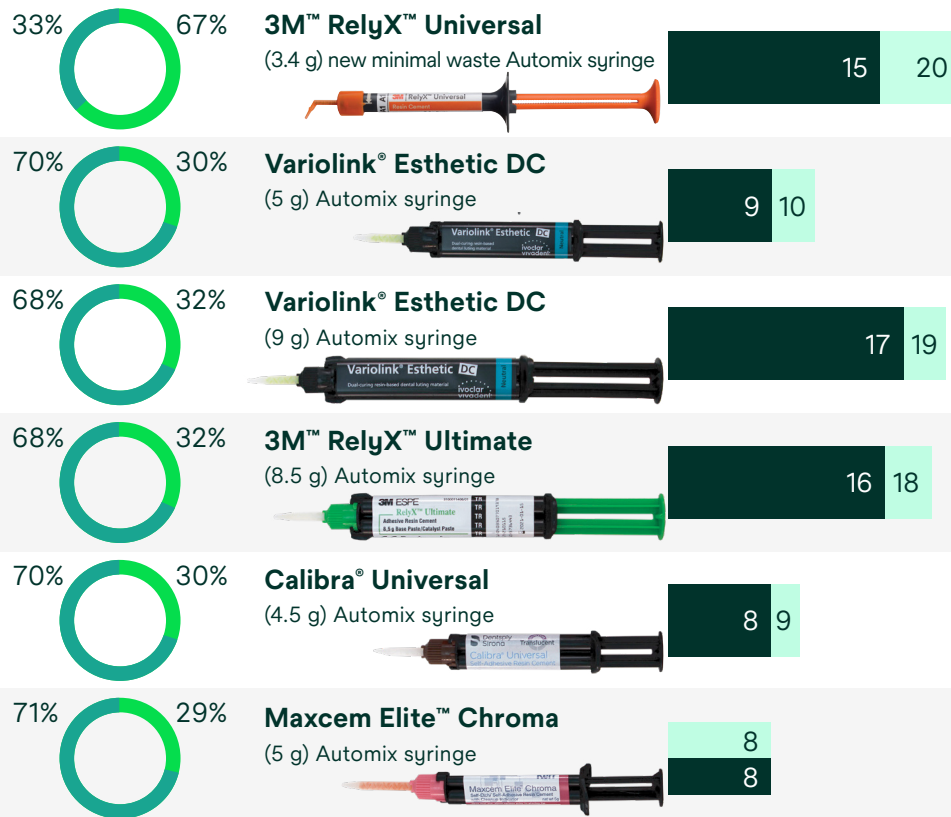
A cement that can do it all Unparalleled simplicity



Number of Automix applications and mixing efficiency¹

■ Wasted cement
■ Usable cement

■ Number of full applications per 90 μ L aliquots
■ Number of full applications per 60 μ L aliquots

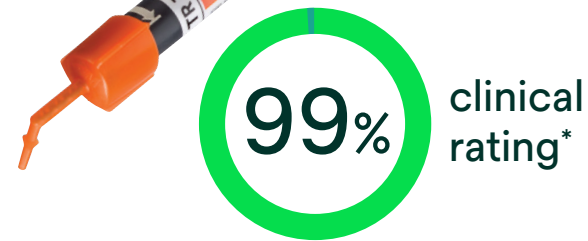


* Dental Advisor Editors' Choice - 99% clinical evaluation rating

¹ Dental Advisor Biomaterials Research Report, 2020

² Per application compared to currently available standard automix systems

³ Source: Field Evaluation EU/USA conducted by Solventum

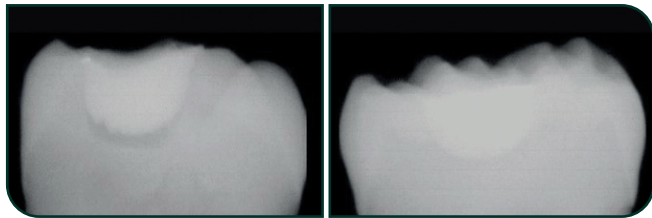


- ✓ RelyX Universal Resin Cement works both as a standalone, self-adhesive cement and as an adhesive cement when combined with 3M™ Scotchbond™ Universal Plus Adhesive
- ✓ Outstanding self-adhesion for maximum efficiency
- ✓ 80% less cement waste with micro mixing tip²
- ✓ Self-sealing for hygienic storage without used mixing tip
- ✓ Virtually no post-operative sensitivity³
- ✓ Higher radiopacity than enamel
- ✓ Easy excess clean-up

The universal adhesive that set the bar ...now raises it

3M™ Scotchbond™ Universal Plus Adhesive

- ✓ First radiopaque universal adhesive



Non-radiopaque
adhesive

Scotchbond Universal
Plus Adhesive

- ✓ Bonds and seals caries-affected dentin
- ✓ Gold standard adhesion to virtually all dental substrates, including glass ceramics
- ✓ Universally suitable for virtually all direct and indirect indications and all etching techniques
- ✓ True one-bottle system with no need for a separate primer, silane or dual-cure activator
- ✓ Virtually no post-operative sensitivity



recommend
to a colleague*



Also available in a unit dose for efficient hygiene management – reduces the risk of cross-contamination

*Dental Advisor Editors' Choice - 100% recommend to a colleague

A universal restorative for every procedure

Discover why 3M™ Filtek™ Dental Restoratives have been trusted in over 1 billion restorations worldwide.

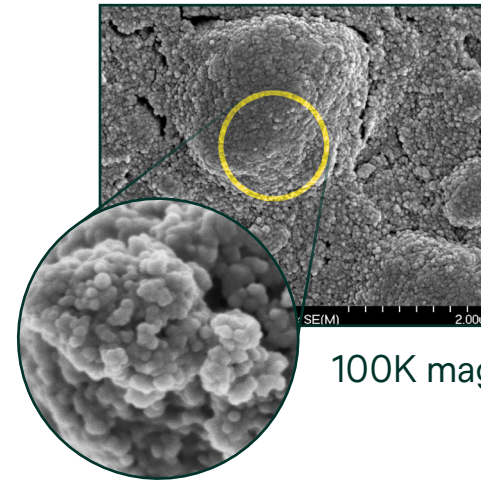


Filtek Supreme Ultra Universal Restorative

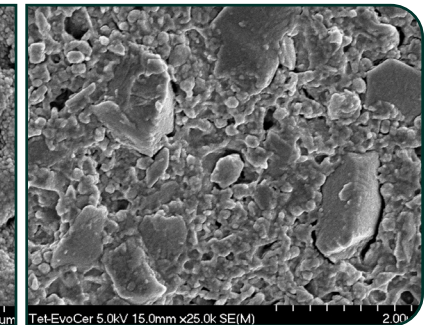
- ✓ 15 years of clinical success
- ✓ Outstanding strength for anterior and posterior
- ✓ Can be used for every class of restoration (I-V)
- ✓ Excellent handling, wear resistance, polish retention and esthetics
- ✓ TRUE nanotechnology
- ✓ Indicated for composite warming

Capsules can be warmed up to 70°C/158°F for up to one hour, lowering extrusion force without changing physical properties**

3M™ Filtek™ Supreme Ultra
Universal Restorative nanocluster



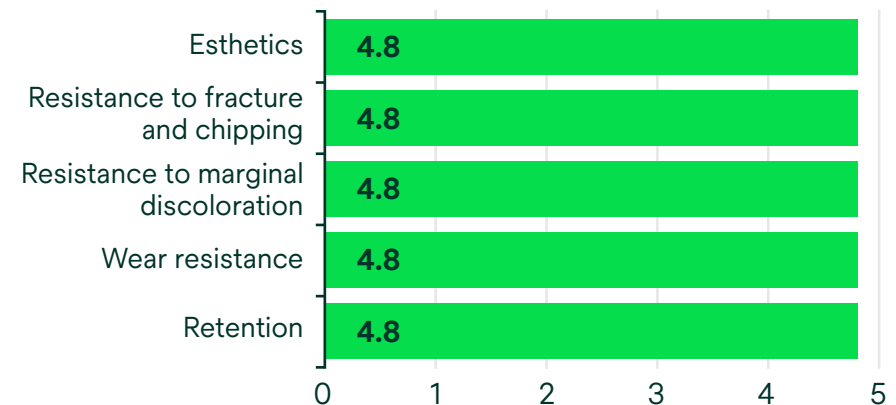
Leading competitive composite



100K magnification of nanocluster

SEM photos courtesy of Dr. J. Perdiago,
University of Minnesota

In a 15-year clinical evaluation, Filtek Supreme Ultra Universal Restorative received a clinical performance rating of 4.8 out of 5 across the following categories.**



*Dental Advisor Editors' Choice - 96% clinical performance rating

**Internal data on file

Ordering information

3M™ RelyX™ Universal Resin Cement

Item no.	Product information
Intro kit	
56968	4x RelyX Universal Resin Cement syringes shades TR, A1, A3O, WO (3.4g each), 60x 3M™ RelyX™ Universal Micro Mixing Tips, 20 Elongation Tips, 1 vial Scotchbond Universal Plus Adhesive (5 ml), 1x Scotchbond Universal Etchant (3 ml), 25 blue etchant tips, 50 orange microbrushes, step-by-step guides
Trial kits	
56969	Shade TR
56970	Shade A1
Each trial kit contains: 1x RelyX Universal Resin Cement syringe (3.4g), 15x RelyX Universal Micro Mixing Tips, 5 Elongation Tips, 1 vial Scotchbond Universal Plus Adhesive (1.5 ml), 1x Scotchbond Universal Etchant (3 ml), 25 blue etchant tips, 50 orange microbrushes, step-by-step guides	
Refills	
56971	Shade TR
56972	Shade A1
56973	Shade A3O
56974	Shade WO
Each refill contains: 1x RelyX Universal Resin Cement syringe (3.4g), 15x RelyX Universal Micro Mixing Tips, 5 Elongation Tips	
Value packs	
56977	Shade TR
56978	Shade A1
Each value pack contains: 3x RelyX Universal Resin Cement syringes (3.4g each), 45x RelyX Universal Micro Mixing Tips, 15 Elongation Tips	

3M™ Scotchbond™ Universal Plus Adhesive

Item no.	Product information
Vial	
41293	Intro kit: 1x Scotchbond Universal Plus Adhesive vial (5 ml), 50 disposable brushes, 1x 3M™ Scotchbond™ Universal Etchant (3ml), 25 dispensing tips
Vial refills	
41294	1x 5 ml vial
41295	3x 5 ml vial
Each vial refill contains: Scotchbond Universal Plus Adhesive vial (5 ml)	
Unit dose	
41297	Intro kit: 50x L-Pop
41298	100x L-Pop
41299	200x L-Pop
41304	400x L-Pop
Each unit dose contains: Scotchbond Universal Plus Adhesive Unit Dose L-Pops, 1x Scotchbond Universal Etchant (3ml), 25 dispensing tips	

3M™ Scotchbond™ Universal Etchant Etching Gel

Item no.	Product information
41263	2x Scotchbond Universal Etchant (3ml each), 50 dispensing tips

3M™ Filtek™ Supreme Ultra Universal Restorative

Syringe shade refills—include 1 – 4g syringe; Instructions for Use
Capsule shade refills—Dentin, Enamel and Translucent shade refills include 10 – 0.2g capsules; Body shade refills include 20 – 0.2g capsules; Instructions for Use

Shade	Syringe	Capsule
Body		
A1B	6028A1B	6029A1B
A2B	6028A2B	6029A2B
A3B	6028A3B	6029A3B
A3.5B	6028A3.5B	6029A3.5B
A4B	6028A4B	6029A4B
A6B	6028A6B	6029A6B
B1B	6028B1B	6029B1B
B2B	6028B2B	6029B2B
B3B	6028B3B	6029B3B
B5B	6028B5B	6029B5B
C1B	6028C1B	6029C1B
C2B	6028C2B	6029C2B
C3B	6028C3B	6029C3B
D2B	6028D2B	6029D2B
D3B	6028D3B	6029D3B
WB	6028WB	6029WB
XWB	6028XWB	6029XWB
Dentin		
A1D	6028A1D	6029A1D
A2D	6028A2D	6029A2D
A3D	6028A3D	6029A3D
A4D	6028A4D	6029A4D
B3D	6028B3D	6029B3D
C4D	6028C4D	6029C4D
WD	6028WD	6029WD
Enamel		
A1E	6028A1E	6029A1E
A2E	6028A2E	6029A2E
A3E	6028A3E	6029A3E
B1E	6028B1E	6029B1E
B2E	6028B2E	6029B2E
D2E	6028D2E	6029D2E
WE	6028WE	6029WE
XWE	6028XWE	6029XWE
Translucent		
Clear	6028CT	6029CT
Blue	6028BT	6029BT
Grey	6028GT	6029GT
Amber	6028AT	6029AT

Learn more about the Solventum Universal Series: [Solventum.com](https://www.solventum.com)



Solventum Dental Solutions
 1-800-634-2249
 Solventum.com

© Solventum 2026. Solventum, the S logo, Filtek and RelyX are trademarks of Solventum or its affiliates. 3M, the 3M logo and Scotchbond are trademarks of 3M. Other trademarks are the property of their respective owners.