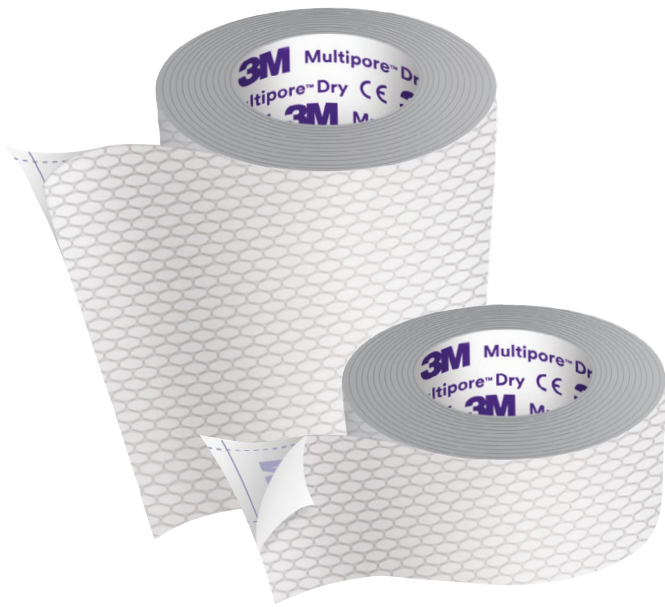




High-strength

3M™ Multipore™ Dry Surgical Tape

# Built for strength and conformability



## Reliable adhesion for your patients' important needs

When you need to keep a tube, device or bulky dressing securely in place, you need adhesion you can count on. 3M™ Multipore™ Dry Surgical Tape is a high-strength, conformable tape that gives you confidence in your securement applications.

### Why choosing the right tape matters



1 in 5

In one study, unplanned extubations occurred in **1 in 5** in the ICU<sup>1</sup> due to inadequate securement for the job.



### Strong adhesion

Good initial adhesion to skin



### Easy to use

Removable grid liner for precise cutting and customization to any shape and size with scissors



### Strong backing

Specialized backing repels water and resists tearing under stress



### Conformable

Soft backing conforms to curves and contours of the skin

# 3M™ Multipore™ Dry Surgical Tape

## High-strength securement

Clinical applications such as:

- Urinary catheters
- Endotracheal tubes
- Nasogastric tubes
  - For use in dry conditions; ensure skin and device are clean and dry before application
- Orogastric tubes
  - Maintain close clinical oversight when excessive fluids and/or secretions are present
- Patient positioning
  - Tape securement and tube position should be monitored routinely
- Secondary securement of central lines

**Consider a barrier like 3M™ Cavilon™ No Sting Barrier Film with Multipore Dry Surgical Tape (per facility protocol).**

**Tape material:** Two-layer woven-cloth. Not made with natural rubber latex.



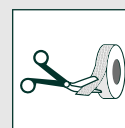
### Ordering information

Catalog number	Size	Rolls/box	Box/case	HCPCS code
3730-0	0.5 in. x 5.5 yd. (1,25 cm x 5 m)	12	4	A4452
3730-1	1 in. x 5.5 yd. (2,5 cm x 5 m)	24	4	A4452
3730-2	2 in. x 5.5 yd. (5 cm x 5 m)	12	4	A4452

Solventum's medical securement products are intended for use on intact skin.

### Application techniques for tube securement:

- Select tape based on intended use and patient's skin condition.<sup>2</sup>
- Ensure skin and device are clean and dry.
- If needed, clip/trim hair and/or consider use of a barrier film to protect at-risk skin, per facility protocols.
- When the area is completely dry, follow these steps:



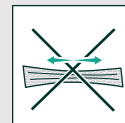
Cut tape length to meet clinical need.



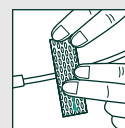
Remove the liner.



Spiral tape around device to maximize surface area contact. Apply firm pressure on the device to enhance adhesion to tubing.



**Note:** Do not stretch or strap tape upon application to avoid causing tension blisters.



Apply firm pressure to tape to ensure adhesive is flush with skin and to maximize adhesion.

- Maintain close clinical oversight when excessive fluids and/or secretions are present.
- Tape securement and tube position should be monitored routinely.

For more information about Multipore™ Dry Surgical Tape and other Solventum™ Medical Securement Products visit <https://go.solventum.com/MedicalSecurement>



**Solventum Corporation**  
3M Center, Building 275  
2510 Conway Avenue East  
Maplewood, MN 55144

1. Cosentino C, Fama M, Foà C, Bromuri G, Giannini S, Saraceno M, Spagnoletta A, Tenkue M, Trevisi E, Sarli L. Unplanned Extubations in Intensive Care Unit: evidences for risk factors. A literature review. Acta Biomed. 2017 Nov 30;88(5S):55-65. doi: 10.23750/abm.v88i5-S.6869. PMID: 29189706; PMCID: PMC6357578.
2. Gorski LA, Hadaway L, Hagle ME, Broadhurst D, Clare S, Kleidon T, Meyer BM, Nickel B, Rowley S, Sharpe E, Alexander M. Infusion Therapy Standards of Practice, 8th Edition. J Infus Nurs. 2021 Jan-Feb 01;44(1S Suppl 1):S1-S224. doi: 10.1097/NAN.0000000000000396. PMID: 33394637.

© Solventum 2026. All Rights Reserved. Solventum, the S logo, Multipore and Cavilon are trademarks of Solventum or its affiliates. 3M and the 3M logo are trademarks of 3M. Other trademarks are the property of their respective owners.  
70-2011-7955-6