



Rethink recovery in reconstructive surgery

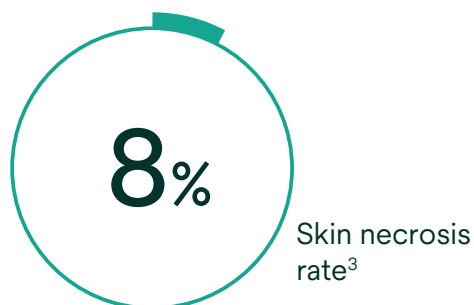
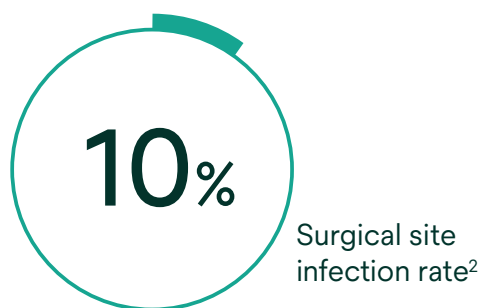
Now you can do more to support your patients and give them the aesthetic and physical outcomes they deserve.

Recognizing the risks of reconstructive surgery

You're confident in the OR and can help give patients peace of mind. However, that confidence can be lost when your patient is discharged from the OR for recovery. After discharge, there can be multiple concerns, including swelling, infections and improper tissue integration. Positive outcomes are top of mind for both you and your patient.

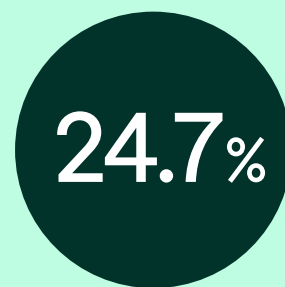
After mastectomy or breast reconstruction:

~21*% Infection rate¹



After abdominal surgeries:

Perfusion-related complications like infection, seroma, hematoma and necrosis are also common:



After amputations:



Surgeons face unique pressures:

- Risk that aesthetic and clinical outcomes will be judged negatively by patients
- Risk that seromas, hematomas and/or infections will result in the need for additional procedures
- Risk that anxious patients will add a layer of scrutiny to the surgical process

Rethink recovery with Solventum™ Prevena Restor™ Therapy

Prevena Restor Therapy helps provide protection and reduces edema by managing the incision and surrounding soft tissue.

The first therapy system to provide 14 days of continuous -125 mmHg negative pressure therapy* with expanded coverage for the incision and surrounding soft tissue.

Prevena Restor Therapy offers patients comprehensive protection with dressings designed for a variety of anatomical locations. Each dressing, combined with negative pressure, provides stabilization to the surgical site and creates a strong barrier to external contaminants, helping patients at risk of developing complications.⁹⁻¹¹

Solventum™ Prevena Restor™ Dressings

Pre-shaped designs for peel and place application

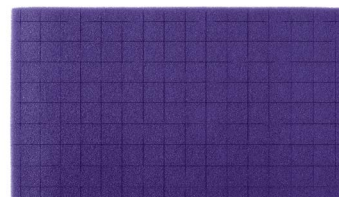
Designed for flexibility and user customization



Solventum™ Prevena Restor™
AxioForm™ Dressing



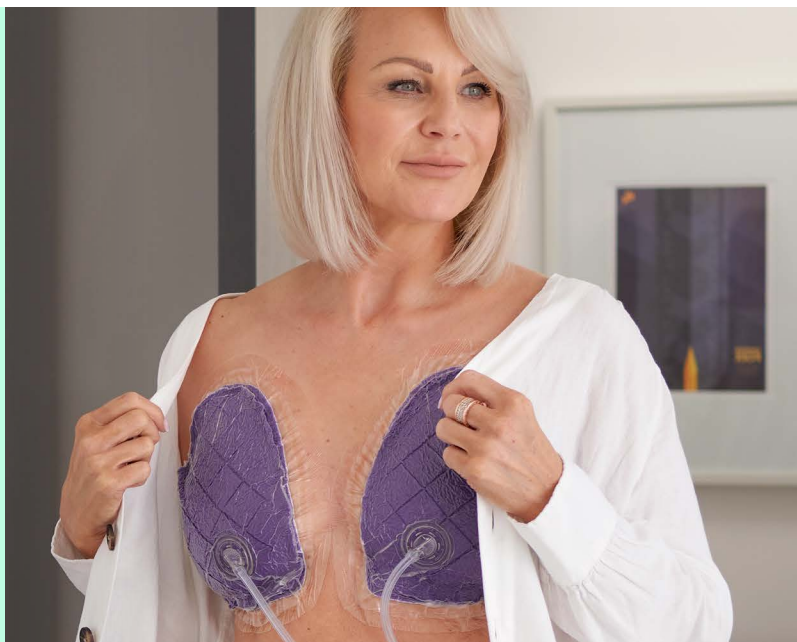
Solventum™ Prevena Restor™
BellaForm™ Dressing



Solventum™ Prevena Restor™
AdaptiForm™ Dressing

Now you can extend your control after discharge to help protect the surgical incision and surrounding soft tissue, support patient compliance with rehab protocols, and set the stage for an optimized recovery.

*Up to 14 days of therapy with a dressing change required at 7 days.



Optimize care with Solventum™ Prevena Restor™ Therapy



Extended therapy time

Up to 14 days (dressing change required after 7 days)



Precision designed

Dressings seamlessly conform to the patient



Expanded coverage area*

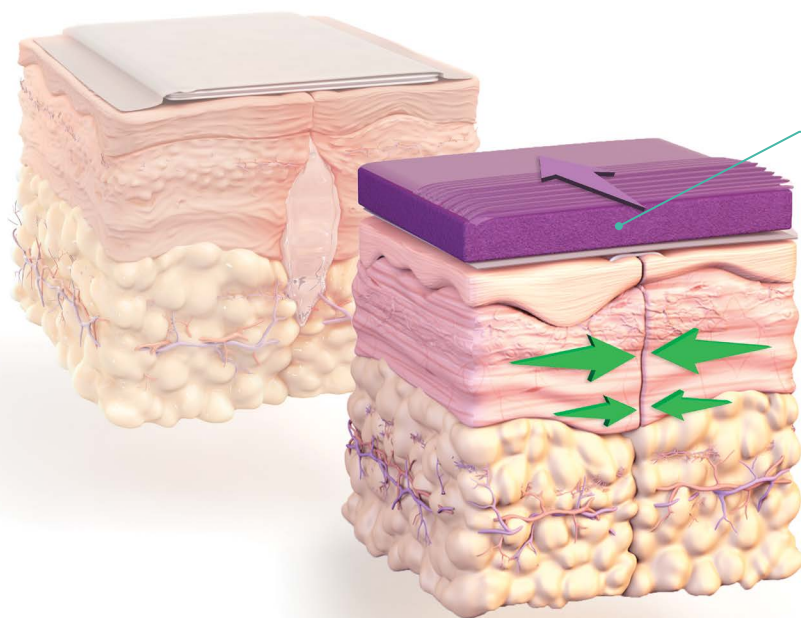
Large dressings deliver therapy to the incision and surrounding soft tissue envelope



Easy to use

A variety of peel-and-place dressings are available, plus a customizable option

Prevena Restor Therapy is built on the proven technology of the original Solventum™ Prevena™ Therapy



Prevena Therapy science and mechanism of action

- Delivers continuous negative pressure therapy (-125 mmHg) to the incision site (up to 7 days)
- Helps hold incision edges together¹²
- Removes fluid and infectious materials¹³
- Creates a barrier to external contaminants⁹
- Reduces edema¹⁴

Solventum™ Prevena Restor™ Incision Management System indication statement

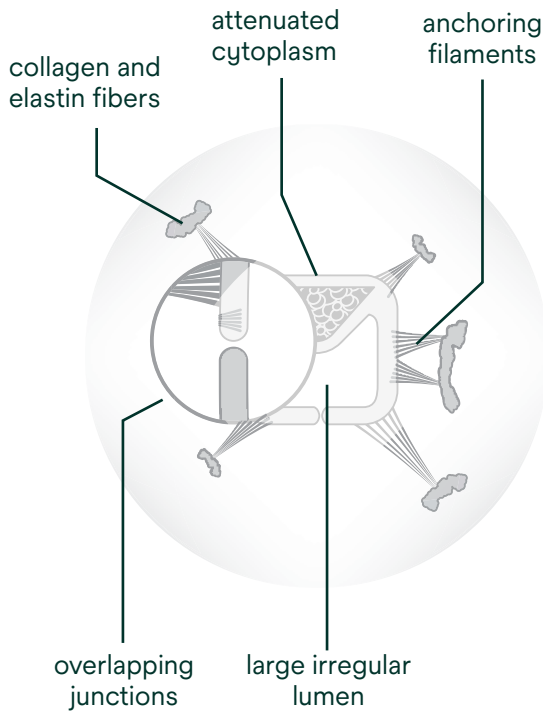
The Prevena Restor Incision Management System is intended to manage the environment of surgical incisions that continue to drain following sutured or stapled closure, by maintaining a closed environment and removing exudates via the application of negative pressure therapy.

*Compared with Solventum™ Prevena™ Dressings.

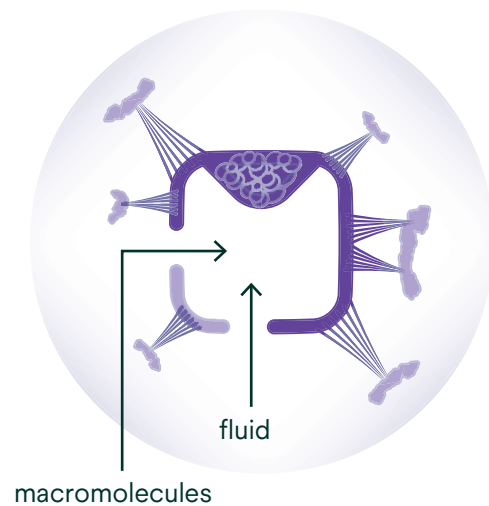
How Solventum™ Prevena™ Therapy reduces edema

The effects of negative pressure applied to intact skin via Prevena Therapy were evaluated using finite element analysis (FEA).¹⁵

Closed terminal lymphatic pore
(overlapping endothelial cells)¹⁶



Open terminal lymphatic pore
(separated endothelial cells)¹⁶



Based on the analysis, it is hypothesized that volumetric expansion may help¹⁵

1. Expand the tissue beneath the dressing, pulling the tissue open
2. Lower local interstitial fluid pressure
3. Open lymphatics to allow fluid clearance

Tissue beneath the dressing is expanded, not compressed

Solventum™ Prevena Restor™ Therapy: Real-world experience

Contact your local Solventum representative or go to Prevena.com/Restor for more real-world Prevena Restor Therapy case studies.



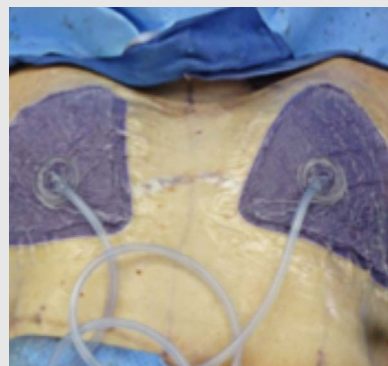
Complex lower extremity wound

Photo courtesy of Allen Gabriel, MD, FACS; Global Surgical Consulting; Camas, WA.



Double mastectomy

Photo courtesy of Allen Gabriel, MD, FACS; Global Surgical Consulting; Camas, WA.



Oncoplastic bilateral breast reconstruction

Photo courtesy of Abhishek Chatterjee, MD, MBA, Tufts Medical Center, Boston, MA.



Lower extremity amputation

Photo courtesy of Julie West, PA, MBA, Ohio State University Wexler Medical Center, Columbus, OH.

Prevena Restor Therapy can be applied to a variety of procedures and anatomical locations:



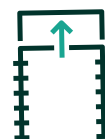
Breast



Abdomen



Soft tissue defects



Flaps

As with any case study, the results and outcomes should not be interpreted as a guarantee or warranty of similar results. Individual results may vary depending on the patient's circumstances and condition.

Solventum™ Prevena Restor™ Therapy— your comprehensive approach to recovery

Rethink recovery with Prevena Restor Therapy



Helps protect
the surgical site



Reduces
edema

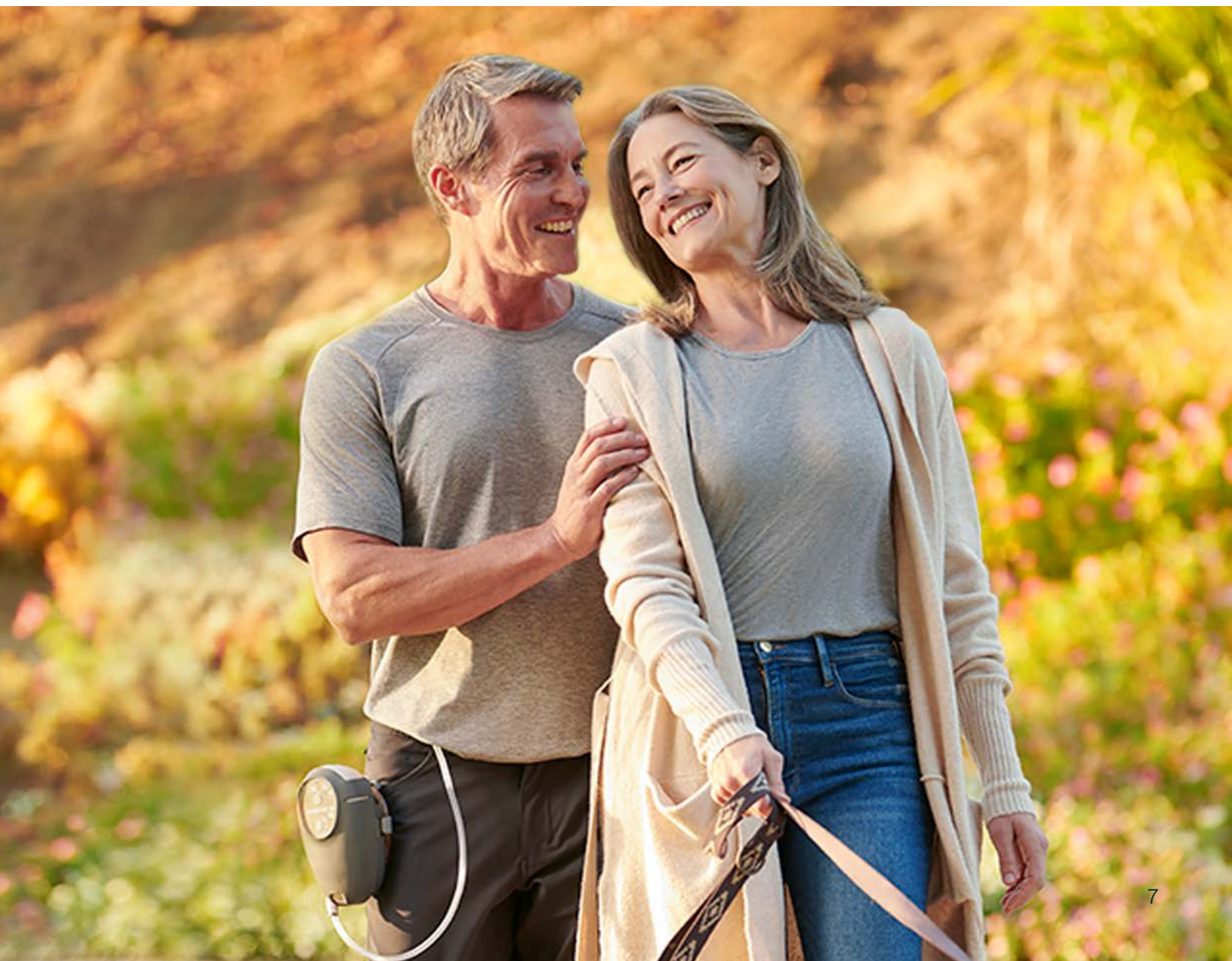


Optimizes
the healing
environment



Enhances
the recovery
experience

Contact your local representative to learn more about Prevena Restor Therapy.



Ordering information

SKU	Description	UOM
Therapy devices		
PRE4000US	Solventum™ Prevena Plus™ 125 Therapy Unit, 7-Day	Each
PRE4010	Solventum™ Prevena Plus™ 125 Therapy Unit, 14-Day	Each
Dressings		
PRE5255	Solventum™ Prevena Restor™ BellaForm™ Dressing, 21 cm x 19 cm	Case of 5
PRE5355	Solventum™ Prevena Restor™ BellaForm™ Dressing, 24 cm x 22 cm	Case of 5
PRE5455	Solventum™ Prevena Restor™ BellaForm™ Dressing, 29 cm x 27 cm	Case of 5
PRE5555	Solventum™ Prevena Restor™ AxioForm™ Dressing, 29 cm x 28 cm	Case of 5
PRE6055	Solventum™ Prevena Restor™ AdaptiForm™ Dressing, 49 cm x 28 cm	Case of 5
Accessories		
PRE4095	Solventum™ Prevena™ Plus Canister, 150 ml	Case of 5
Kits		
PRE5201	Solventum™ Prevena Restor™ BellaForm™ Incision Management System, 21 cm x 19 cm	Each
PRE5301	Solventum™ Prevena Restor™ BellaForm™ Incision Management System, 24 cm x 24 cm	Each
PRE5401	Solventum™ Prevena Restor™ BellaForm™ Incision Management System, 29 cm x 27 cm	Each
PRE5501	Solventum™ Prevena Restor™ AxioForm™ Incision Management System, 29 cm x 28 cm	Each
PRE6001	Solventum™ Prevena Restor™ AdaptiForm™ Incision Management System, 49 cm x 28 cm	Each

Note: The data referenced in this brochure was derived from studies using the Solventum family of negative pressure technology, but not specifically Solventum™ Prevena Restor™ Therapy.

Note: Specific indications, limitations, contraindications, warnings, precautions, and safety information exist for these products and therapies. Please consult a clinician and product instructions for use prior to application. Rx only

References:

- Jagsi R, Jiang J, Momoh AO, et al. Complications After Mastectomy and Immediate Breast Reconstruction for Breast Cancer: A Claims-Based Analysis. *Ann Surg*. 2016;263(2):219-27.
- Bennett KG, Qi J, Kim HM, et al. Comparison of 2-Year Complication Rates Among Common Techniques for Postmastectomy Breast Reconstruction. *JAMA Surg*. 2018;153(10):901-908.
- Sue GR, Long C, Lee GK. Management of Mastectomy Skin Necrosis in Implant Based Breast Reconstruction. *Ann Plast Surg*. 2017;78(5 Suppl 4):S208-S211.
- Bullocks J, Basu CB, Hsu P, et al. Prevention of Hematomas and Seromas. *Semin Plast Surg*. 2006;20(4):233-240.
- Krishnan NM, Purnell C, Nahabedian MY, et al. The cost effectiveness of the DIEP flap relative to the muscle-sparing TRAM flap in postmastectomy breast reconstruction. *Plast Reconstr Surg*. 2015;135(4):948-958.
- Jensen JS, Mandrup-Poulsen T, Krasnik M. Wound healing complications following major amputations of the lower limb. *Prosthetics and Orthotics International*. 1982;6(2):105-107
- Morisaki K, Yamaoka T, Iwasa K. Risk factors for wound complications and 30-day mortality after major lower limb amputations in patients with peripheral arterial disease. *Vascular*. 2018;26(1):12-17.
- Stone PA, Flaherty SK, Aburahma AF, et al. Factors affecting perioperative mortality and wound-related complications following major lower extremity amputations. *Ann Vasc Surg*. 2006;20(2):209-216.
- Payne J. Evaluation of the resistance of the Prevena™ incision dressing top film to viral penetration. San Antonio, TX: Kinetic Concepts, Inc.; June 19, 2009 Report No.: 0000021109.
- Suh H, Hong JP. One stage allogenic acellular dermal matrices (ADM) and split-thickness skin graft with negative pressure wound therapy. In: Gore M, ed. *Skin Grafts. Intech Open*, 2013.
- Hall WW, Jeffords K, Hauck RM, et al. Negative-pressure dressings as a bolster for skin grafts. *Ann Plast Surg*. 1998;40(5):453-457.
- Wilkes RP, Kilpadi DV, Zhao Y, et al. Closed incision management with negative pressure wound therapy (CIM): biomechanics. *Surg Innov*. 2012;19(1):67-75.
- Kilpadi DV, Cunningham MR. Evaluation of closed incision management with negative pressure wound therapy (CIM): hematoma/seroma and involvement of the lymphatic system. *Wound Repair Regen*. 2011;19(5):588-596.
- Glaser DA, Farnsworth CL, Varley ES, et al. Negative pressure therapy for closed spine incisions: a pilot study. *Wounds*. 2012;24(11):308-316.
- Balakrishna H. Negative Pressure Therapy on Intact Skin: Poroelastic Finite Element Modeling of Interstitial Fluid Pressures. 25 June 2019.
- Skobe M, Detmar M. Structure, function, and molecular control of the skin lymphatic system. *J Invest Dermatol Symp Proc*. 2000;5(1):14-19.



Solventum Advanced Wound Care

12930 IH10 W
San Antonio, TX 78249
USA

Phone 800-275-4524
Web Solventum.com

© Solventum 2025. Solventum, the S logo, Prevena and other trademarks are trademarks of Solventum or its affiliates. Other trademarks are the property of their respective owners.

70-2013-1331-0