

Dressing application reference guide

For use with the Solventum™ V.A.C.® Ultra™ Therapy Unit and Solventum™ ActiV.A.C.™ Therapy Units

Note: The Solventum™ V.A.C.® Dressing should be changed once every 48–72 hours, but no less than three times a week. For infected wounds, dressings may need to be changed more often.

Preparation

Open wound:

- Remove previous dressing – you can use sterile water or normal saline if adhered to the wound
- Thoroughly cleanse and irrigate the wound
- Accurate wound assessment – measure once weekly or when dressing change occurs
- Cleanse and thoroughly dry the periwound area
- Apply a skin preparation if wound is in an area subject to excessive moisture or fecal contamination e.g. liquid barrier film to the periwound

Dressing application

1. V.A.C.® Dressings:

- Cut the V.A.C.® Dressing to the wound dimensions. Away from the wound, gently rub the edges of the freshly cut foam to remove any loose pieces
- Gently place foam into the wound cavity – avoid foam contact on the periwound skin
- Foam should touch the entire base and sides. Solventum™ V.A.C.® White Foam Dressing should be used in explored tunnels and undermined areas. Do not use Solventum™ V.A.C.® Granufoam™ Dressing or Solventum™ V.A.C.® Granufoam™ Silver Dressing in tunnels. If using more than 1 piece of foam, always count the total number of pieces of foam used in the wound. Document the foam quantity and dressing change date on the drape or Foam Quantity Label if available, and in the patient's chart

2. Solventum™ V.A.C.® Drape:

- Size and trim the V.A.C.® Drape to allow a 3–5cm border around the wound
- Apply over entire wound – if it is easier you can cut the drape into smaller pieces
- Lift the drape with thumb and forefinger and cut a round 2.5cm hole in the drape for Solventum™ SensaT.R.A.C.™ Pad placement

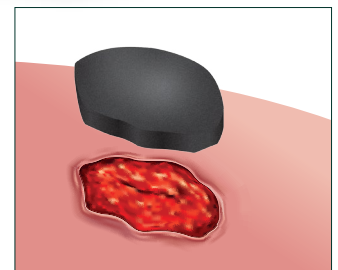
3. SensaT.R.A.C. Pad:

- Apply the SensaT.R.A.C. Pad opening directly over the hole in the V.A.C.® Drape
- Apply gentle pressure to ensure a seal
- Apply an additional piece of drape to anchor the tubing if necessary

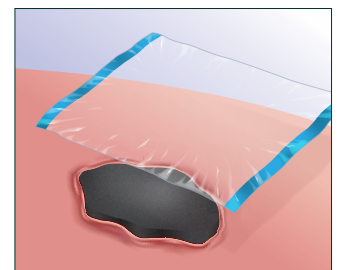
Commencing therapy

- Ensure the tubing is connected to the canister tubing and both clamps are open
- Press the power button on – adjust therapy settings if necessary
- In less than 1 minute of operation, the V.A.C.® Dressing should collapse into the wound
- Check the device, the panel will indicate the pressure reached

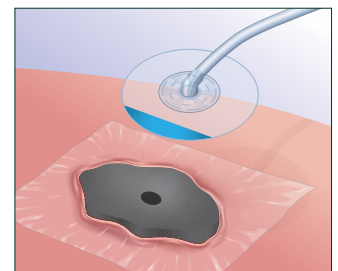
Note: Please refer to the current V.A.C.® Dressing instructions for use, clinical guidelines, user manual and safety information sheet



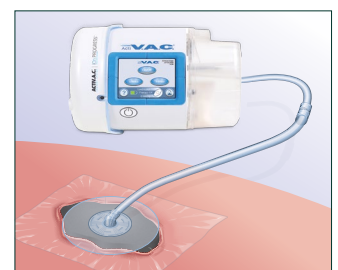
Dressing application



Drape application



SensaT.R.A.C. Pad application

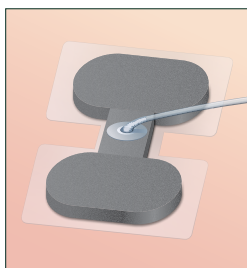


V.A.C.® Therapy

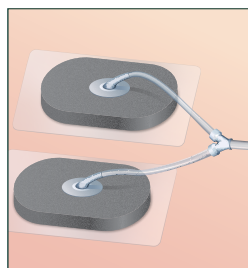
For further information, please contact your local representative at **1-800-275-4524**.

Dressing application reference guide

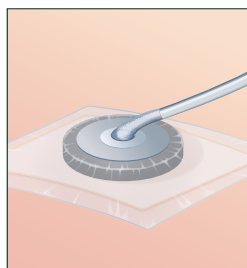
Techniques for bridging, Solventum™ V.A.C.® Y-Connector and Solventum™ SensaT.R.A.C.™ Pad placement away from the wound. Please see the Solventum™ V.A.C.® Therapy clinical guidelines for detailed specialized Solventum™ V.A.C.® Dressing application information.



Bridging multiple wounds close together.



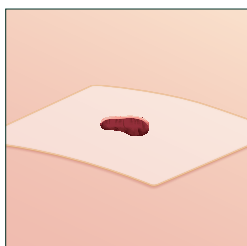
Multiple wounds with a V.A.C.® Y-Connector.



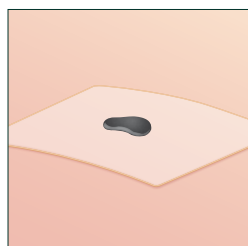
SensaT.R.A.C. Pad placement (away from bony prominences or weight bearing surfaces).

Note: To protect fragile, excoriated or intact skin a thin layered dressing – such as Solventum™ V.A.C.® Drape, hydrocolloid layer, or vapor permeable adhesive dressing may be used.

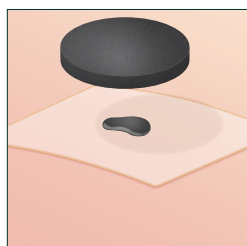
Small wound dressing technique



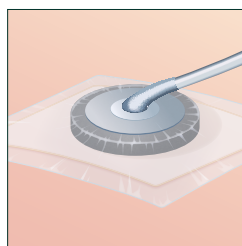
Frame the wound with a protective thin layered dressing e.g. V.A.C.® Drape or hydrocolloid.



Fill wound with foam.

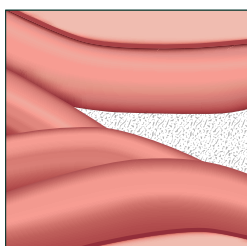


An additional piece of foam is placed over the wound foam to support the SensaT.R.A.C. Pad.

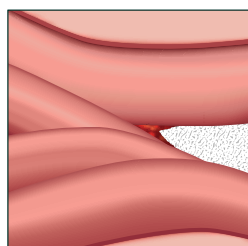


Place drape over the foam, cut 2.5cm hole in drape and center the SensaT.R.A.C. Pad over the foam securing the tubing.

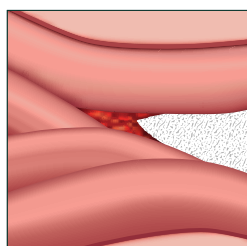
Explored and undermining wound beds



Ensure the Solventum™ V.A.C.® White Foam Dressing is gently placed, but in contact with the wound surface.



At each subsequent dressing change pull the V.A.C.® White Foam Dressing Kit back 1–2cm to encourage collapse of the tunnel.



Note: Do not use Solventum™ V.A.C.® Granufoam™ Dressing or Solventum™ V.A.C.® Granufoam™ Silver Dressing in wound tunnels.

Contact your local Solventum Account Representative, call the Solventum Helpline at **1-800-275-4524**, or visit [Solventum.com](https://www.solventum.com) for more information.



Solventum Advanced Wound Care
12930 IH10 W
San Antonio, TX 78249
USA

Phone 800-275-4524
Web [Solventum.com](https://www.solventum.com)

Note: Specific indications, contraindications, warnings, precautions and safety information exist for these products and therapies. Please consult a clinician and product instructions for use prior to application. This material is intended for healthcare professionals. Rx only.

© Solventum 2026. Solventum, the S logo, V.A.C.® Ultra, ActiV.A.C. and other trademarks are trademarks of Solventum or its affiliates. Other trademarks are the property of their respective owners.

US_70-2013-1353-6