

Solventum™ V.A.C.® Therapy dressings bridging technique guide: Bridging away to reposition Solventum™ SensaT.R.A.C.™ Pad

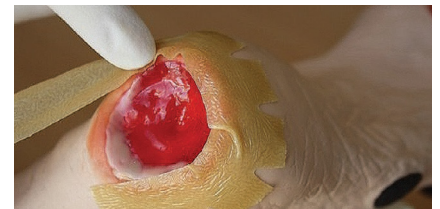
Avoid additional pressure on bony prominences, e.g., sacrum, heel, ankle, trochanter, ischium, due to tubing placement.

For wounds located in challenging areas, such as the heel of the foot, it is best to use a bridging technique to ensure that additional pressure is not applied as a consequence of the placement of the tubing and/or the SensaT.R.A.C. Pad. This involves using foam to allow placement of the SensaT.R.A.C. Pad and tubing away from the wound.



After cleaning the wound as per your institution's policy, protect the intact skin around the wound by framing the wound with Solventum™ V.A.C.® Drape, hydrocolloid or another occlusive barrier.

Tip: Cutting slits along the outside edge of the material framing the wound allows you to “curve” the material around circular wounds, for quicker and accurate application.



Continue to protect intact skin from foam contact by applying V.A.C.® Drape or another occlusive barrier onto the dorsum of the foot (or an alternative area dependent upon the location of the wound). This is where you will be placing the “bridge” of foam for the placement of the SensaT.R.A.C. Pad.



Gently place appropriate Solventum™ V.A.C.® Dressing into the wound.

Tip: Use V.A.C.® Drape as an anchoring strip to secure foam into position.



Place a longer piece of foam around the foot, extending from the wound to the dorsal aspect, and ensure that it contacts the foam dressing in the wound. Ensure the foam does not come in contact with intact skin.

Note: Always count the total number of pieces of foam used in the wound. Document the foam quantity and dressing change date on the drape or Foam Quantity Label, if available, and in the patient's chart.



Tip: Use smaller pieces of V.A.C.® Drape to ensure accurate placement to avoid leaks. Avoid using one large piece of V.A.C.® Drape which will create folds that may lead to leak alarms.

Tip: Follow the contours of the body for effective sealing. In this example, a strip placed at the back of the heel will intuitively fold towards the lateral aspect of the foot, whereas the strip placed along the underside of the heel will intuitively fold upwards along the lateral aspect of the lower leg.



Apply the Solventum™ V.A.C.® Drape to obtain a seal, over the foam used as the “bridge.” Be sure there is a foam piece large enough to place the Solventum™ SensaT.R.A.C.™ Pad (refer to “Dressing Small Wounds and SensaT.R.A.C. Pad Application” in the Solventum™ V.A.C.® Therapy Clinical Guidelines).



Cut a 2.5cm hole in the drape on the anterior aspect of the foot and apply SensaT.R.A.C. Pad.





Note: the negative pressure is distributed along the “bridge” created by the foam to deliver therapy to the wound bed.

Appropriate off-loading of the foot is essential in order to maximize the therapeutic benefits of V.A.C.® Therapy.



Specialized bridging solution products: Easier, faster bridging options

Disposables	Solventum™ V.A.C.® Granufoam™ Bridge Dressing	Solventum™ V.A.C.® Granufoam™ Bridge XG Dressing
	 <p>M8275042/5: 5 pack M8275042/10: 10 pack</p>	 <p>M8275044/5: 5 pack</p>
Description	<ul style="list-style-type: none"> V.A.C.® Granufoam™ Bridge Dressing with preattached SensaT.R.A.C. Pad Pre-cut V.A.C.® Granufoam™ Dressing Perforated Solventum™ V.A.C.® Drape Solventum™ V.A.C.® Ruler 	<ul style="list-style-type: none"> V.A.C.® Granufoam™ Bridge XG Dressing with preattached SensaT.R.A.C. Pad 2 x V.A.C.® Granufoam™ EX Dressing – Medium V.A.C.® Ruler Perforated V.A.C.® Drape V.A.C.® Drape
Indications for use	<p>Ideal for smaller wounds</p> <p>Eg: diabetic foot ulcer, use with off-loading modalities and a pressure injuries such as sacral, heel, back of the head</p>	<p>Ideal for medium to large wounds</p> <p>Eg: surgical wound breakdowns in difficult locations, pressure injuries such as sacral and trochanter</p>

For more information, please contact your local representative or call **1-800-275-4524**.



Solventum Advanced Wound Care
12930 IH10 W
San Antonio, TX 78249
USA

Phone 800-275-4524
Web Solventum.com

Note: Specific indications, contraindications, warnings, precautions, and safety information exist for these products and therapies. Please consult a clinician and product instructions for use prior to application. This material is intended for healthcare professionals only. Rx only.

© Solventum 2026. Solventum, the S logo and other trademarks are trademarks of Solventum or its affiliates.

70-2013-1354-4