



## Advantage: Manage exudate while drawing wound edges together

### Why managing exudate is important

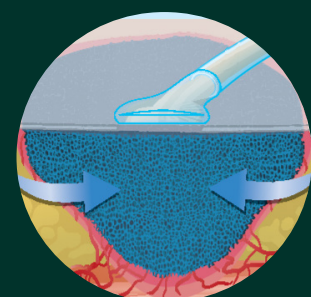
Exudate is part of the wound healing process, and is required for an optimal environment for healing. Excessive or abnormal exudate, however, could delay healing or indicate an infected wound, leading to complexities including periwound maceration and poor patient well-being. Healing can also be prolonged, burdening both patients and facility resources.<sup>1</sup>

The Snap Therapy System is a disposable negative pressure wound therapy (NPWT) that may help avoid these complexities by:

- Removing exudate, infectious material, and tissue debris away from the wound, into a canister while drawing wound edges together to promote the healing process
- Maintaining patients' quality of life and mobility<sup>2</sup> through a discreet, quiet and comfortable design
- May reduce cost\* associated with longer treatment times as well as complications compared with modern dressings<sup>3</sup>
- Supporting an environment to promote healing of small, low-exuding chronic, acute, traumatic, subacute, and dehisced wounds, ulcers, surgically closed incisions, flaps, and grafts

### Exudate monitoring made easy

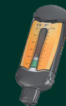
Managing exudate effectively includes assessing its quantity and characteristics. The visual indicator on the canister helps you monitor changes and exudate levels with 60ml or 150ml capacity options.




**Shown to create macrostrain at the wound bed<sup>4</sup>**

The application of uniform negative pressure by the device induces a physical response drawing wound edges together.


**Negative pressure level options**



-75mmHg



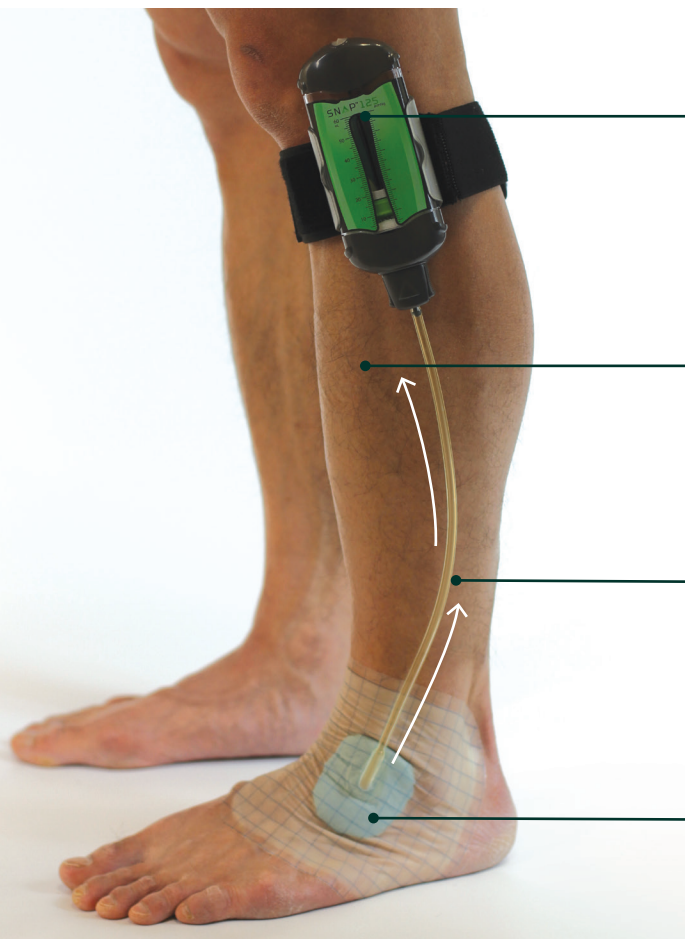
-100mmHg



-125mmHg  
60ml and 150ml  
canister capacities

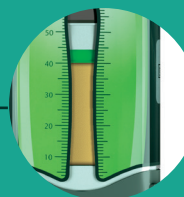
\*Based on US study of diabetic lower extremity wounds that analyzed the costs and effectiveness of the treatment of diabetic lower extremity wounds, Hutton and Sheehan reported that, compared to modern dressings, Snap™ Therapy System saved over \$9,000 per wound treated by avoiding longer treatment times and costs for complications and healing more wounds than the modern dressings.

## How the 3M™ Snap™ Therapy System works



### Mechanically powered

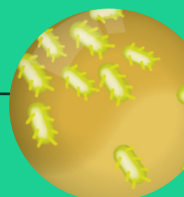
Proprietary spring mechanism generates consistent, even levels of pressure. No batteries and no lead wires to trip over.



### Collects

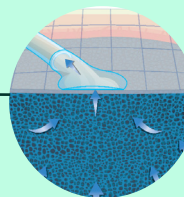
Proprietary technology gels the exudate that collects in the cartridge, helping to contain and control potential contamination and odor.

The visual display shows the amount of gelled fluid collected in the canister.



### Removes

Exudate, infectious material and tissue debris are drawn away from the wound through the tubing into the canister.



### Sealed environment

The dressing's hydrocolloid properties help maintain a seal in the presence of exudate or sweat, offering periwound protection.<sup>5</sup>

## Help patients get back to their lives

The Snap Therapy System combines the simplicity of advanced wound dressings with the proven benefits of negative pressure wound therapy in a discreet design. It's fast to apply, and can be done in approximately 10 minutes so patients can quickly move on with their lives.<sup>2</sup>

1. Wounds UK Best Practice Statement. Effective exudate management. London: *Wounds UK*, 2013. Available to download from: [www.wounds-uk.com](http://www.wounds-uk.com)
2. Armstrong DG, Marston WA, Reyzelman AM, Kirsner RS. Comparative effectiveness of mechanically and electrically powered negative pressure wound therapy devices: a multicenter randomized controlled trial. *Wound Rep Reg* 2012; 20(3):332-341.
3. Hutton DW, Sheehan P. Comparative effectiveness of the Snap™ Wound Care System. *Int Wound J* 2011;doi:10.1111/j.1742-481X.2011.00775.
4. Kieswetter, K. Evaluation of Pico and Snap dressings: Strain on a Drape Substrate. 29 June 2017. Doc-0000045386.
5. Marston WA, Armstrong DG, Reyzelman AM, Kirsner RS. A Multicenter Randomized Controlled Trial Comparing Treatment of Venous Leg Ulcers Using Mechanically Versus Electrically Powered Negative Pressure Wound Therapy. *Advances in Wound Care*. 2015;4(2):75-82.

NOTE: Specific indications, contraindications, warnings, precautions and safety information exist for these products and therapies. Please consult a clinician and product instructions for use prior to application. This material is intended for healthcare professionals. Rx only.



To learn more about the benefits of 3M™ Snap™ Therapy System, visit [solventum.com](http://solventum.com) or contact your local representative.

### Solventum Medical Surgical

Charnwood Campus | 10 Bakewell Road | Loughborough | LE11 5RB  
Phone: +44 (0)1509 611 611

3M Ireland Limited | The Iveagh Building | The Park, Carrickmines | D18 X015 | Ireland  
Phone: +353 (0)1 280 3555

© Solventum 2026. All rights reserved. 3M and the other marks shown are marks and/or registered marks. Unauthorised use prohibited. Used under license in Canada. All other marks are property of their respective owners.