



**37** CLINICAL EVALUATORS

---

**656** TOTAL USES

---

**91%** CLINICAL RATING

**Key features:** Three shades: Bright, Natural, Warm • Naturally adaptive opacity • Ergonomic and color-coded syringes

## Description

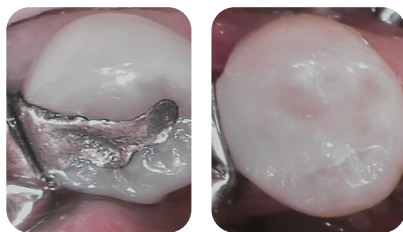
**Filtek Easy Match Flowable** is a three-shade, flowable restorative with body-like opacity that delivers a simplified workflow for single-shade restorations and natural-looking results. It is available in syringes in shades bright, natural, and warm.

## Indications

- Direct restorations of all cavity classes (I-V)
- Base/Liner under direct restorations
- Repair of small defects in the esthetic indirect restorations
- Repair of resin and acrylic temporary materials
- Pit and fissure sealants

## Unique Attributes

- Quick, easy and intuitive shade selection without sacrificing opacity
- Simplified single-layer restorations, including high-end esthetic restorations
- Excellent shade match for most anterior and posterior restorations
- Tip designed to reduce bubbles and stop material "run-on" during and after dispensing



Photos courtesy of Dr. Anthony Valentine



## Clinical Tips

- Use smaller increments as using too much may be difficult to handle because of the viscosity.
- Dispense the material incrementally by placing the metal tip very close (but not into) the uncured material.
- To match esthetics, consider using it with **3M™ Filtek™ Easy Match Universal Restorative**.

**"EXCELLENT SHADE MATCH AND FINAL POLISH."**

## Evaluators' Comments

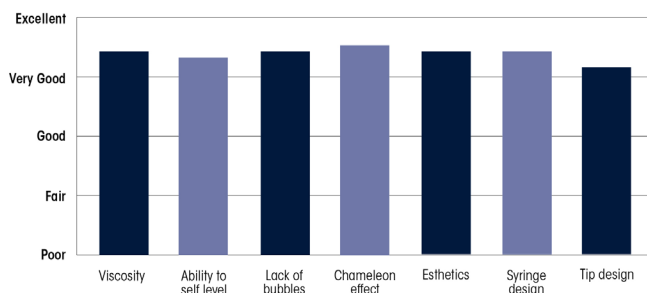
- "It's a good flowable and nice that it has 3 shades."
- "The final polish of the restoration is very good."
- "Consistency of the material allows for sufficient working time and flows well within the prep."
- "The syringes are great and easy to handle. The tips bend and are very useful."
- "It did slump a bit too easily."
- "I do not like that you have to use the special/non-universal tips with Solventum flowables."

**92%** Consultants who would: Recommend to a colleague

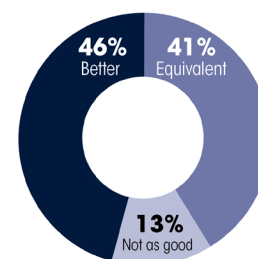
**22%** Consultants who would want to stock in office: Yes, instead of current product

**62%** Yes, in addition to current product

### Evaluation Summary:



### Compared to Competitive Products:



**NOTE:** Background information from the evaluation on this page is provided for internal use only and will not appear in the final report.

## SOLVENTUM™ FILTEK™ EASY MATCH FLOWABLE (Solventum)

How would you compare <i>Filtek Easy Match Flowable</i> to the brand you use most often?	
Answer Choices	Responses
Better	29%
About the same	33%
Not as good	38%

### What product are you comparing it to?

#### Better:

- I have several locations all using different products.
- TPH spectra
- Shade and polishing
- Wave flow (SDI)
- 3M
- Filtek Supreme
- Handling, esthetics
- Spectra Flow
- Venus flow
- 3M Filtek supreme restorative
- Beautifil
- G-aenial gold flowable

#### Same:

- Filtek Supreme (2 respondents)
- Kuraray, Kerr, GC, 3M
- Venus Flow
- Sirona SDR
- Omnicroma
- Simplishade
- Kuraray Majesty Flow

#### Not as good:

- Omnicroma
- Kuraray Majesty
- G-Aenial Universal Flo
- Spectra
- G-aenial Injectable Universal

If <i>Filtek Easy Match Flowable Restorative</i> was used in conjunction with <i>Filtek Easy Match Universal Restorative</i> , How satisfied are you with the Shade Blend/Chameleon Effect when used together?	
Answer Choices	Responses
Very satisfied	60%
Satisfied	32%
Neutral	8%
Dissatisfied	0%
Very dissatisfied	0%

What percent of direct restorations would you use <i>Filtek Easy Match Flowable Restorative</i> with <i>Filtek Easy Match Universal Restorative</i> ?	
Answer Choices	Responses
0-25%	16%
26-50%	30%
51-75%	30%
76-100%	24%

Which procedures did you use <i>Filtek Easy Match Flowable Restorative</i> for?	
Answer Choices	Responses
Class I	81%
Class II	57%
Class III	30%
Class IV	24%
Class V	62%
Base/Liner	30%
Pit and Fissure Sealant	30%
Restoration Repair	43%
Temporary Restoration Repair	32%

### Comments:

- Esthetic bonding of maxillary laterals
- Addressing small facial irregularities
- Ortho attachments
- Depends on size/extent of decay and occlusion forces

### What brands of flowable composite are you using?

- Tokuyama Omnicroma (5 respondents)
- Kuraray (5 respondents)
- Simplishade (3 respondents)
- SDR (2 respondents)
- Don't use much flowable
- Clinician's Choice
- VOCO
- Filtek Supreme
- Beautifil
- 3M Filtek Supreme
- Kerr
- G-Aenial Universal Flo
- OMNICHROMA Flow
- Wave (SDI)
- Venus flow

**NOTE:** Background information from the evaluation on this page is provided for internal use only and will not appear in the final report.

## SOLVENTUM™ FILTEK™ EASY MATCH FLOWABLE (Solventum)

### What brands of flowable composite are you using? (cont.)

- Kerr Herculite Ultra
- Kerr, GC, 3M
- Every other brand of composite except SDI and Kerr
- Venus, BioActive bulk flow and regular flow.
- G-Aenial Universal Flo GC America
- Spectra
- GC and Kerr
- GC injectable composite
- SpectraFlow
- 3M Filtek Supreme flowable restorative
- Estelite Sigma
- 3M Filtek Supreme
- Filtek
- Venus Flow
- G-aenial Universal Flo
- GC, Kuraray
- Venus One
- TPH Spectra Flow

### What did you like best about Filtek Easy Match Flowable?

- Simplified shades. Such as natural, bright, warm names. Easy for my associate dentists to match (10 total respondents)
- Polishability. The final polish of the restoration is very good. (3 respondents)
- The shade matching was good (2 respondents)
- Viscosity, did not run (2 respondents)
- It flowed very nicely (2 respondents)
- Its shade matching abilities (2 respondents)
- It fills just like the Filtek Supreme but with better color matching
- Handling
- The chameleon affect was actually very nice. Impressed that it was able to blend better than other materials I have seen in the past.
- Convenient, saved me time and patients were happy.
- Excellent opacity to hide dark stains.
- No Bubbles
- One of the best composites from 3M by far! Excellent shade match, and final polish
- It's a good flowable, and nice that it is 3 shades.
- I like its syringe design but not so much its tip design.
- Versatile, the warmth of shading.
- The syringes are great and easy to handle. The tips bend and are very useful.
- That the flowable and packable match in color - often times we have only A2 as flowable, nice to have the same product, same shade
- Shade is better and the handling is superior to Ominichroma, it's softer to handle, easier to move and shape
- Ease of use
- Delivery system
- It's fantastic to match shade, essentially undistinguishable
- Consistency of the material allows for sufficient working time and flows well within the prep.

### What did you like best about Filtek Easy Match Flowable? (cont.)

- Easy to use and decide on shade. Very similar in many respects to Simplishade. Good material and did what it was designed to do intraorally. Will be interesting to see the longevity/wear over time.
- Shade matching and ability to self-level
- The stackability of the flowable was good. My personal preference is less flow.
- Handling and final result
- I liked the way the shade blended in with the tooth shade. I never had to get out my shade guide once when using it.
- Amazing flow and handling
- Ease of color match - excellent chameleon effect!
- I wanted more!
- I used this material with an anterior veneer system and it was a homerun!
- Naming makes selecting shade so easy. Also easy for assisting.

### What did you like least about Filtek Easy Match Flowable?

- Syringe tip (5 respondents) noting: diameter of syringe tip, more flexibility in tip is needed, Tip design is not universal, proprietary tips, different from all the other tips I have in my office
- It did slump a bit too easily
- 1. I hated the large tip! I tried switching to the G Aenial Tip but it would not fit. I use flowable for small restorations and like to "flow" it into the cavity preparation. The tip was large and more would come out than I liked.
- It seemed a bit too viscous
- Aesthetics. Poor polish and color matching was not good. Material oftentimes looked too white and did not have much of a chameleon effect.
- Syringes look somewhat similar, not easily identifiable
- Would like to use a universal dispensing system for flowable composite so it reduces the variety of tips in set up
- I do not like that you have to use the special / non-universal tips with 3M flowables. Also, I did not like the huge box it came in for 3 syringes. It is counterproductive to 3M's less waste initiative.
- The flowable itself is fine, but I did not like the outcomes with the matching packable composite.
- Not "perfect" as my Venus one regular composite is successful at 100% matching of the desired shade
- This I found to apply to my C shaded teeth.
- Had to choose between three shades, whereas with Omnichroma, one syringe does it all.
- Working time. requires bond and the packable component sets up very fast
- If it had more flex, it would be good
- It is harder to stock with 3 shades than 1 shade
- I would like a thinner tip, more stackability properties, and better polishability
- A bit runny
- Did not flow to fill space like flowable I'm currently using
- In some Class 5 cervical lesions the final product had a slight "glint effect" where you could see the beveled prep margin closest to the gingiva.
- Quality of final polish, not super smooth
- The naming of the shades.

**NOTE:** Background information from the evaluation on this page is provided for internal use only and will not appear in the final report.

## SOLVENTUM™ FILTEK™ EASY MATCH FLOWABLE (Solventum)

### Were there any situations in which you felt Filtek Easy Match Flowable was especially helpful?

- Class 3 and certain class 5
- I liked it for injection provisionals
- Anterior esthetics and material repairs
- Shallow Class I restorations
- Anterior composites
- Lining, composite repair.
- Great as the final layer on Class I restorations.
- Shade match is very good.
- Anterior matching
- Patching anterior composites.
- Worked in every area I used it. I used it nearly everywhere, even on provisionals to strengthen them.
- It is especially easy to use on the facial of an anterior tooth to match the color of adjacent teeth.
- Base of box in class IIs
- Class 5's and the "warm" shade disappeared. Pt was mid 20's though. It may need a darker shade for geriatric patients.
- I see a lot of pediatric patients and time is of the essence. I don't have lots of time to sit there and shade match. I like knowing the flowable I'm using will match without worrying about the shade selection
- Works great in box forms as a base/liner due to its viscosity. Also, it works really well as a sealant

### Do you have any suggestions for improving Filtek Easy Match Flowable?

- Nothing, it is great (10 responses)
- Make tip more narrow if possible
- Improved identification of Warm, Natural, Bright syringe by using different colors of syringe or labels.
- Different length syringe tips
- The 3-shade Easy Match works as a flowable, but not in the packable. It does not look nearly as aesthetic as other reduced shading systems on the market. Also make a syringe that can accept a universal tip instead of a specialized flowable tip
- One shade should have a better match to C shades I. Less warmth, more grey
- Make it more chameleon like and not have three shades to choose from
- Figure out set time and why it starts to cure and get tacky so fast
- Increment depth is 2mm, but it should be different in deeper restorations. Use the fist increment as a liner
- Include a thinner tip as well and the current tips
- It's a good product with its only outstanding feature being cosmetic dentistry. Advertise it
- Will have to think about this. I was happy with the product

### Do you have any suggestions for improving Filtek Easy Match Flowable? (cont.)

- I think it's one of the best ones out there
- Make universal tips
- Make the tip more malleable so I can bend it easily if needed
- Very good material ... the only two complaints I have are with the tips and the naming of the materials

### Do you have any clinical tips for using Filtek Easy Match Flowable?

- Make sure to bevel restoration
- Use smaller increments as using too much may be difficult to handle because of the viscosity
- To match aesthetics, one should consider using it with the Easy Match Universal Restorative.
- Great restorative material especially when masking a dark stain is needed.
- While doing direct composite crowns or veneers, place an initial layer with flowable and then layer the universal composite. It gave an amazing final product (void/bubble free).
- Use it as you would a flowable.
- Pick shade prior to start of preparation
- None! Instructions were clear and good to use in different situations
- Dispense the material incrementally by placing the metal tip very close (but not into) the uncured material.
- Go slow with dispensing and use brush on occlusal
- Use bond on all instruments at all times
- Vertically store the syringe, increment placement and curing.
- Do not use for highly aesthetic cases, but it's great to use on posteriors where aesthetics aren't as much of a concern
- Follow the instructions and you will be impressed.
- It has a lot of various uses. Better viscosity than a lot of Flowable composites.
- Dispense slowly to get full sense of workability of material
- Be open to the matchability of the 3 shades. It's surprising how well it blends in.
- Just go with your gut on shade selection. If the tooth is a lighter color use the "light" shade flowable. If the tooth is darker than most then use the "dark" shade flowable. You cannot make an error this way in shade selection.

#### Did you experience any problems during the evaluation?

Answer Choices	Responses
Yes	0%
No	100%