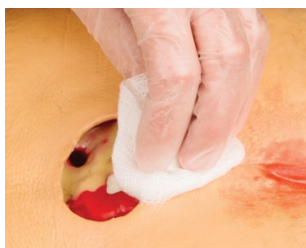


Solventum™ V.A.C.® Simplace™ Ex Dressing

For complete instructions for use and safety information, please refer to the labeling provided with the product

Step 1.

Perform a thorough cleaning of wound and periwound area per physician order or institutional protocol prior to each dressing application. Dry periwound tissue.



Step 2.

Assess wound dimensions including presence of undermining or tunnels.



Step 3.

Consider the use of skin preparation product to protect the periwound skin.



Step 4.

Protect fragile or friable periwound skin with additional Solventum™ V.A.C.® Drape, hydrocolloid, or other transparent film.



Step 5.

Carefully tear the V.A.C.® Simplace™ Ex dressing along the perforation to a size that will allow the foam to be placed gently into the wound without overlapping onto intact skin. Do not cut the foam over the wound as fragments may fall into the wound.



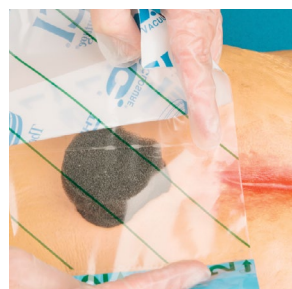
Step 6.

Gently place the foam into the wound cavity ensuring contact with all wound surfaces. Do not pack the dressing into the wound. Always count the number of foam pieces placed in the wound. Record on the Foam Quantity Ruler and place in the patient record.



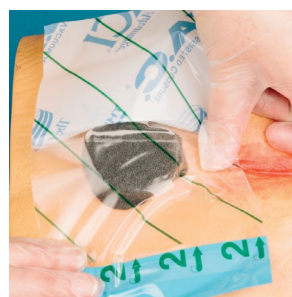
Step 7.

Trim the V.A.C.® Drape to cover the V.A.C.® Simplace Ex dressing and an additional 3 to 5cm border of intact tissue.



Step 8.

Place the adhesive face down and apply V.A.C.® Drape to cover foam and intact skin ensuring V.A.C.® Drape covers at least a 3 to 5cm border of intact periwound tissue.

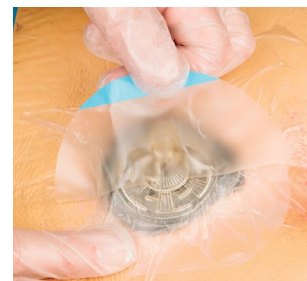


Step 9.

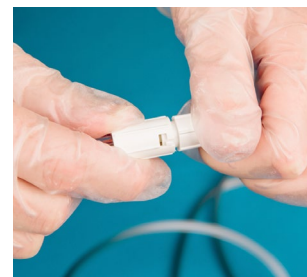
Pinch Solventum™ V.A.C.® Drape and carefully cut a hole approximately 2.5cm through the drape.

**Step 12.**

Pull back on blue tab to remove pad stabilization layer.

**Step 13.**

Connect Solventum™ SensaT.R.A.C.™ Pad tubing to canister tubing and ensure clamp on each tube is open.

**Step 10.**

Remove both backing layers from pad.

**Step 14.**

Turn on power to the Solventum™ V.A.C.® Therapy Unit and select prescribed therapy settings to initiate therapy.

**Step 11.**

Place pad opening in central disk directly over hole in V.A.C.® Drape, and apply gentle pressure to ensure complete adhesion of the pad.



For more information, contact your local representative.



Solventum Advanced Wound Care

Phone 800-275-4524
Web Solventum.com

Note: Specific indications, contraindications, warnings, precautions and safety information exist for these products and therapies. Please consult a clinician and product instructions for use. This material is intended for healthcare professionals.

© Solventum 2025. Solventum, the S logo and other trademarks are trademarks of Solventum or its affiliates.

70-2013-1087-0 PRA-PM-AT-00022 (06/21)