



Filtek™ Matrix

Welcome Guide



Great smiles are a snap –
let's get started.

Welcome to the anterior restorative solution that helps simplify procedures for you and your patients.

You've made a great decision. You're ready to offer your patients a cost-attractive restorative option and take advantage of all the Filtek™ Matrix benefits.



Predictability

The streamlined digital workflow provides patients a valuable service without the stress of free-hand shaping.



Efficiency

Enjoy faster, simplified and more efficient procedures with less chair time.



Esthetic Results

Get esthetic results aligned to the digital design using clinically proven Filtek™ Dental Composites.



Conservative

Procedures are additive and maintain healthy tooth structure, leading to a more conservative design than other more invasive ceramic procedures.



Before



After

Photos courtesy of Dan Poticny, DDS, PA



Before



After

Photos courtesy of Lois Duerst, DDS

A perfect pairing.

Use Filtek™ Supreme Ultra Universal Restorative with the Filtek™ Matrix for exceptional results. This versatile universal composite features excellent adaptation, handling and polish retention while delivering unsurpassed esthetics and outstanding strength for every restoration.



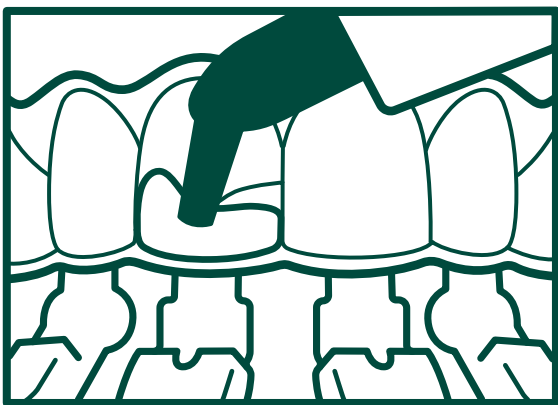
We're here to help you get comfortable with the Filtek™ Matrix.

The Filtek™ Matrix Training Kit is designed to let you practice and hone your technique on different typodonts to help build your confidence providing this valuable new service.

Set yourself up for clinical success with Filtek™ Matrix training.

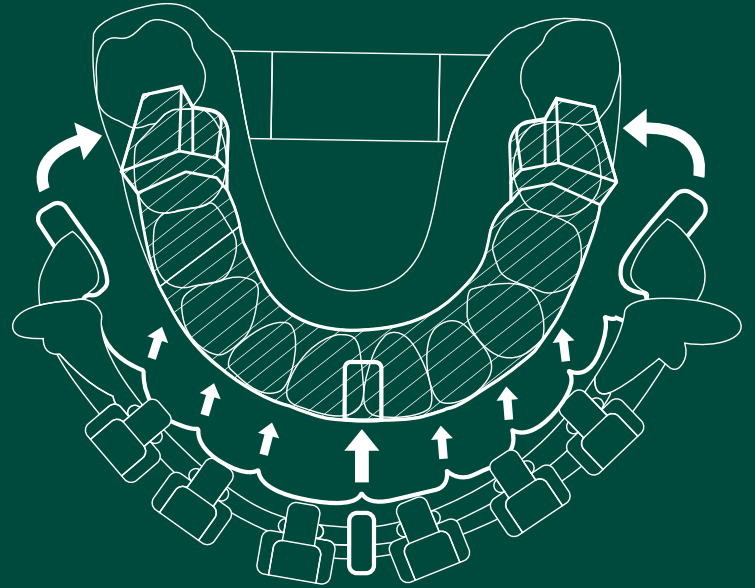
Completing the training will help you:

- Confidently place and remove the matrix
- Practice and understand filling technique
- Experience finishing and polishing



Scan the QR code to view the Filtek™ Matrix Learning Series and discover the essentials of using the Filtek Matrix.

Placing the Filtek™ Matrix

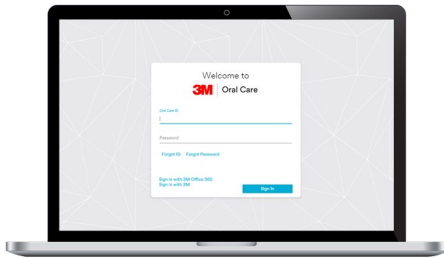


- 1 | Try on to ensure proper fit
- 2 | Place lingual matrix first
- 3 | Open doors to seat and remove
- 4 | Remove labial matrix first

Important! Align midline tab of the lingual and labial matrices before gently snapping the posterior clamps into position to avoid matrix fracture.

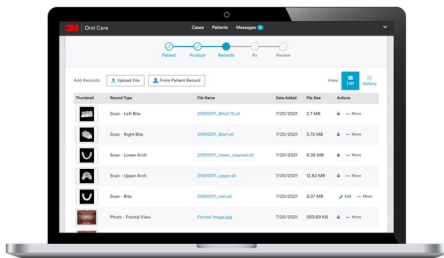
Activate your Clarity™ Portal account to integrate the Filtek™ Matrix into your practice.

The Clarity™ Portal allows you to design truly customizable treatment options for your patients.



1 Activate Your Account

- Accept email invitation to set-up your account
- Bookmark Clarity.Solventum.com



2 Prepare Your Records Collection Plan

- Review steps to upload a high quality .stl file
- Pair select scanners directly with your Clarity™ Portal account
- Request prepaid shipping boxes for impressions
- Plan for required records



Required Records

Digital Scan/.stl File

1. Upper and lower arch
2. Left and right bite recommended

or

Physical Impressions

1. Upper and lower impressions
2. Bite registration

And

Case Photos

1. Frontal
2. Right and left lateral
3. Upper and lower occlusal plane

3 Highlight the Filtek™ Matrix to Your Staff

- Create log-ins for staff involved in records upload process
- Review and display the patient materials

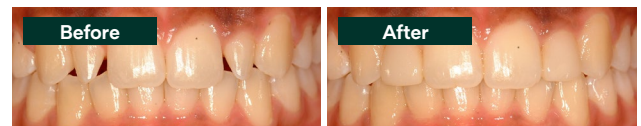
Finding patients who are a good fit for Filtek™ Matrix procedures.

Your patient's goals for their teeth may be limited by their knowledge of available procedures. Offering them a minimally invasive, cost-attractive option may be exactly what they are looking for.

Simple and straightforward.

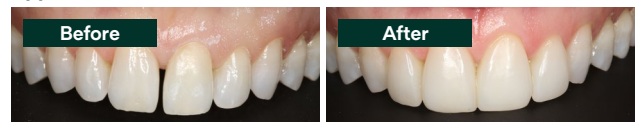
Starting with simple procedures will help drive early confidence and success when using the Filtek™ Matrix. Many patients already in your practice may have peg laterals or diastemas they would treat if aware of a simple, conservative treatment option. Cases like these can be excellent candidates for your first few procedures.

Peg Lateral



Photos courtesy of Dan Poticny, DDS, PA.

Upper Veneer



Photos courtesy of Adam Hodges, DDS, PA.

Bigger treatments, bigger benefits.

Now that you're comfortable with the Filtek™ Matrix, you may consider more complex procedures like full maxillary cases. Using the matrix on more complicated procedures can lead to significant time savings—and help you grow your practice.

Diastemas



Photos courtesy of Lois Duerst, DDS.

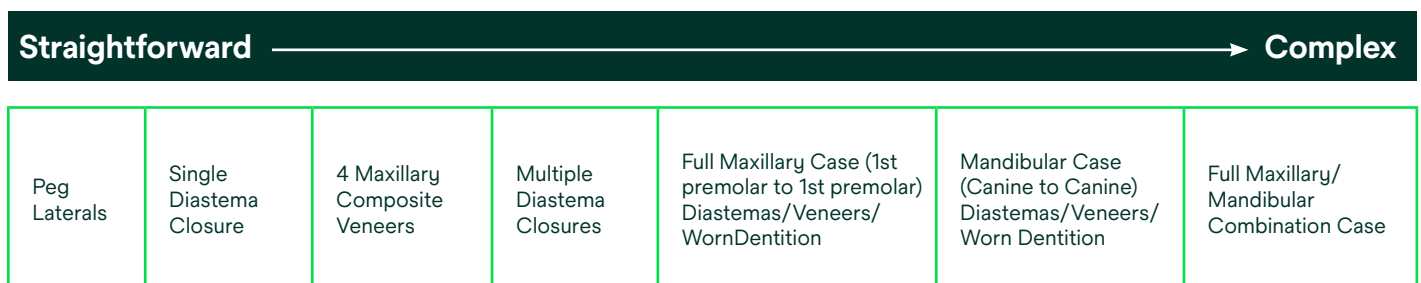
Lower Veneer



Photos courtesy of Lois Duerst, DDS.

Filtek™ Matrix Case Selection

Take your bonding digital today! The matrix brings predictability and efficiency that lets you deliver more smiles from the straight forward to the complex.



Promoting the Filtek™ Matrix Procedure

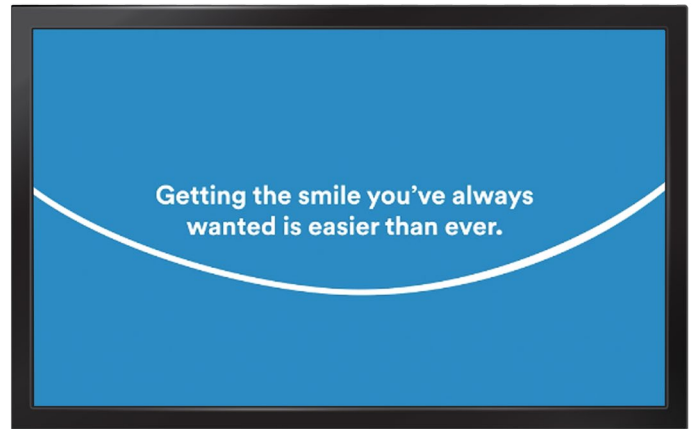
We have a variety of ways to help you let your patients know they have a new treatment option. Click the QR code to view the content available to you.



Patient Brochure



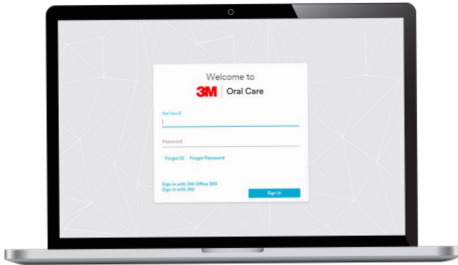
Patient Waiting Room Video



Patient Clinical Case and FAQ Guide

3M Filtek Matrix Closing Spaces			
Undersized Teeth			Post Orthodontic
<input checked="" type="checkbox"/> No tooth preparation required	<input checked="" type="checkbox"/> Match or shift color	<input type="checkbox"/> Tooth preparation required	<input checked="" type="checkbox"/> Match or shift color
Veneers		<input type="checkbox"/> Both preparation required	
<input checked="" type="checkbox"/> No tooth preparation required	<input checked="" type="checkbox"/> Match or shift colour	<input checked="" type="checkbox"/> Create symmetry	<input checked="" type="checkbox"/> Add length
<input checked="" type="checkbox"/> Create symmetry	<input checked="" type="checkbox"/> Add length		

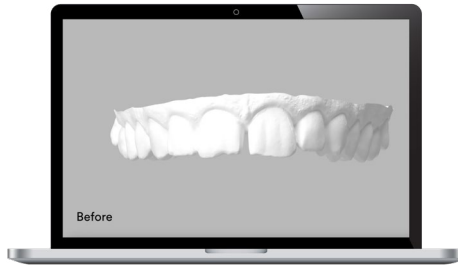
Now that you're ready to start treating patients, here is a step-by-step process for you to follow.



Step 1: Ensure Your Clarity™ Portal Account is Active

Being prepared will help your first Filtek™ Matrix procedures go smoothly.

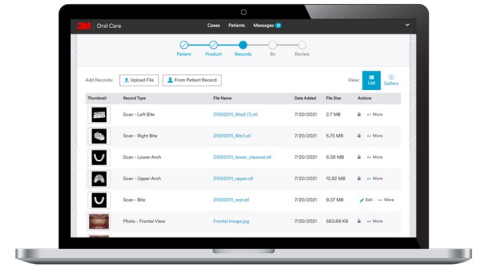
- Accept the Clarity™ Portal Invitation
- Familiarize yourself with the portal and set up any staff
- Be sure to pair scanners if available prior to the records appointment
- Review required scans and photos



Step 2: Collect Records at the Appointment

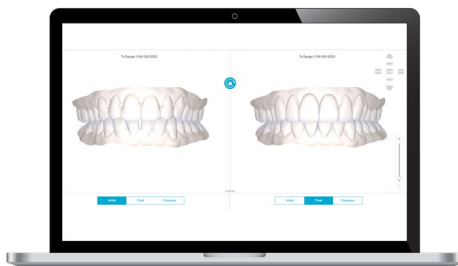
Photos and scans will help improve your ability to deliver the desired results.

- Take full arch scans including upper arch, lower arch and bite registration
- Take required photos



Step 3: Complete Digital Prescription on the Clarity™ Portal

- Upload patient records in the Clarity™ Portal
- Enter patient information and complete the prescription



Step 4: Review Treatment Design and Approve Restoration

Production of your Filtek™ Matrix will not begin before the design is approved.

- Assess the Filtek™ Matrix digital mock-up
- Approve or make changes



Step 5: Solventum Produces Filtek™ Matrix

- The 3D-printed matrix will be ready to use when it arrives
- Production typically takes less than two weeks
- In the meantime, review training resources



Step 6: Transform Your Patient's Smile

- Schedule and complete the procedure
- Be sure to check Clarity™ Portal for case updates
- Review case notes and tips and tricks documents for technique guidance

Need Help?

For case specific questions, message Solventum directly in the Clarity™ Portal or call the Oral Care Customer Care team for troubleshooting and technical support: 1-800-634-2249.



Warranty: Solventum warrants this product will be free from defects in material and manufacture at the time of purchase. Solventum MAKES NO OTHER WARRANTIES INCLUDING ANY IMPLIED WARRANTY OF MERCHANTABILITY OR FITNESS FOR A PARTICULAR PURPOSE. User is responsible for determining the suitability of the product for user's application. If this product is defective within the warranty period, your exclusive remedy and Solventum's sole obligation shall be repair or replacement of the Solventum product. Limitation of Liability: Except where prohibited by law, Solventum will not be liable for any loss or damage arising from this product, whether direct, indirect, special, incidental or consequential, regardless of the theory asserted, including warranty, contract, negligence or strict liability.



Solventum Dental Solutions
1-800-634-2249
www.solventum.com

© Solventum 2025. Solventum, the S logo, ESPE and Filtek are trademarks of Solventum or its affiliates. 3M, the 3M logo and Scotchbond are trademarks of 3M. All other trade names referenced are the service marks, trademarks or registered trademarks of their respective companies. 70-2013-7431-4