

Record breaking toughness for strong posterior temporization.

Giovanni Molina Lugo, DDS, Mexico City, Mexico

Diagnosis and treatment planning: A patient visited the office with a long term PFM posterior bridge. Clinical examination revealed the PFM bridge had functional, mechanical, and biological problems. While a new posterior bridge restoration was being fabricated, a provisional restoration was created using 3M™ Protemp™ 4 Temporization Material.



Fig. 1: Initial clinical situation.



Fig. 2: After diagnostic impressions, an individualized diagnostic wax-up was performed.



Fig. 3: An impression of the diagnostic wax-up was taken using 3M™ Express™ STD Putty. A stone model of the wax-up and a vacuum form matrix was created.



Fig. 4: After removal of the PFM bridge, the vacuum form matrix was placed and verified on the prepared natural abutments.



Fig. 5: 3M™ Protemp™ 4 Temporization Material was dispensed into the vacuum form matrix.



Fig. 6: The matrix with the temporary material was placed in mouth. Due to its transparency, it was possible to check the fit.

Record breaking toughness for strong posterior temporization.

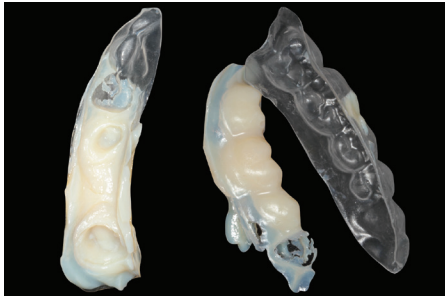


Fig. 7: The matrix was removed after the recommended setting.

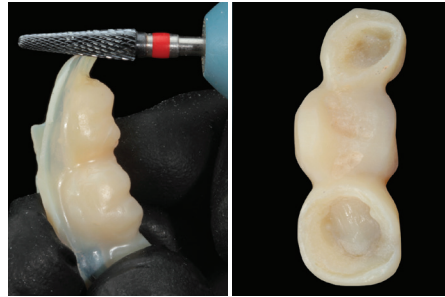


Fig. 8: The excess material of the new provisional bridge was trimmed.



Fig. 9: Finished provisional bridge.



Fig. 10: 3M™ RelyX™ Temp NE Cement was used for temporary cementation.



Fig. 11: Excess removal of the temporary cement.



Fig. 12: Final 3M™ Protemp™ 4 temporary bridge in place.

3M.com/Protemp

3M

3M Oral Care
2510 Conway Avenue
St. Paul, MN 55144-1000 USA

Phone 1-800-634-2249
Web 3M.com/dental

3M Canada
Post Office Box 5757
London, Ontario N6A 4T1
Canada

Phone 1-888-363-3685

3M, Protemp and RelyX are trademarks of 3M Company or 3M Deutschland GmbH.
Used under licence in Canada. Please recycle. © 3M 2017. All rights reserved.