

# Now our most popular flowable is easier to inject

3M™ Filtek™ Supreme Flowable Restorative is available in an ergonomic syringe designed for improved comfort and easier injection.<sup>1</sup>

## Reduce bubbles and waste

Virtually no bubbles or material “run-on” during dispensing gives you better control.<sup>2,3</sup>

## No more guessing

The blue syringe barrel indicates the remaining material volume. When your syringe is empty, only the white plunger shows.

## Easy to hold and inject

Triangle finger plate and plunger make it quick and easy to personalize your grip.<sup>5,6</sup>



## Bendable cannula

Easy-to-bend without kinking for better access.<sup>4</sup>



## Key benefits

- Virtually no bubbles or material “run-on”<sup>2,3</sup>
- Easy-to-bend cannula for improved access<sup>4</sup>
- Ergonomic design is easy to hold and inject<sup>1</sup>
- Excellent adaptation, polish retention and wear resistance<sup>7,8</sup>
- Versatile for a wide range of indications and techniques

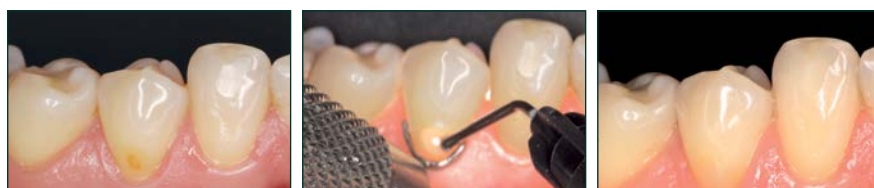
## Can be warmed for injection moulding

Warm up to 70°C for up to one hour, up to 25 times.<sup>9</sup>



## Clinical cases

3M™ Filtek™ Supreme Flowable Restorative offers a smooth transition from material to tooth for aesthetic restorations.



Before

Flowable placement

After

Photos courtesy of Dr. Gunnar Reich, Munich, Germany

3M™ Filtek™ Supreme Flowable Restorative adapts easily and seals the margin.



Before

Flowable placement

After

Photos courtesy of Dr. Giuseppe Chiodera, Brescia, Italy

## Indications

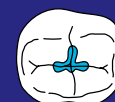
(Incremental up to 2 mm)



Class III



Class V



Minimally Invasive Dentistry (MID)<sup>10</sup>



Base



Liner



Repair of Indirect (small defects)



Repair<sup>11</sup>



Undercut Block-out



Pit & Fissure Sealant

Refer to Instructions for Use for full list of indications.

## Ordering information



3M™ Filtek™ Supreme Flowable Restorative Refills  
Syringe refills include: 2 – 2g syringes; 20 dispensing tips.

SHADE	ITEM NO.
A1	6032A1
A2	6032A2
A3	6032A3
A3.5	6032A3.5
A4	6032A4
B1	6032B1
B2	6032B2
C2	6032C2
D2	6032D2
White	6032W
Extra White	6032XW
OA3	6032OA3

ITEM NO.	PRODUCT INFO.
3700T	3M™ Filtek™ Supreme Flowable Restorative Dispensing Tips, 20-gauge, Gray (20)



### References

1. 3M Oral Care Internal Data. Easier to control delivery. Claim Number 7636.
2. 3M Oral Care Internal Data. Virtually no bubbles. Claim Number 7642, 7647.
3. 3M Oral Care Internal Data. Virtually no run-on. Claim Number 7648.
4. 3M Oral Care Internal Data. Easy to bend the Tomodachi metal cannula. Claim Number 7656.
5. 3M Oral Care Internal Data. Triangle shape plate allows for quick and easy orientation and grip. Claim Number 7654.
6. 3M Oral Care Internal Data. Easy to dispense material. Claim Number 7657.
7. 3M Oral Care Internal Data. Polish retention. Claim Number 4480.
8. 3M Oral Care Internal Data. High wear resistance. Claim Number 4468.
9. 3M Oral Care Internal Data. Warming. Claim Number 7665.
10. Including small, non stress-bearing occlusal restorations.
11. Repair of acrylic temporary and composite resin.



Solventum  
Charnwood Campus, Bakewell Road, Loughborough, LE11 5TH, United Kingdom

Solventum 3M Healthcare Ireland Ltd  
2 Cumberland Place, Fenian Street, Dublin 2, D02 HOV5, Ireland

For more information, visit [Solventum.com](https://www.solventum.com)

© Solventum 2025. Solventum and the S logo are trademarks of Solventum or its affiliates. 3M and the 3M logo are trademarks of 3M. All other trademarks are owned by their respective owners.